





For decades, the founders of Alfresco have been manufacturing commercial kitchen equipment for many of the nation's finest restaurants and hotels. Alfresco Open-Air Culinary Systems was launched, offering a whole new level of quality in luxury residential appliances. This would be the most complete line of restaurant-inspired luxury outdoor kitchen appliances, utilizing the same manufacturing methodologies used in commercial restaurant equipment.

Alfresco appliances will make any professional chef feel right at home, and will inspire anyone who wishes to produce culinary creations like a pro. Unparalleled quality, workmanship, performance and design combined with constant innovation have been the driving force in making Alfresco the most distinctive and complete line of outdoor kitchen appliances available today. All Alfresco appliances are proudly built from scratch in City of Industry, California - U.S.A.

TABLE OF CONTENTS

	Page
Alfresco Grills	
Features & Benefits	4
Why Choose Alfresco?	8
Your Passion in Color	10
Built-In Grills	12
Cart Grills	18
Alfresco Grill Accessories	27
15 Ways to Cook	28
Drop In Grill Accesories	30
Dedicated Griddle	31
Versa Power	32
Side Burners	34
Versa Sink	35
Garnish Rail & Plating Station	37
Trash Centers & Accessories	37
Doors & Drawers	38
Dry Storage Pantries	40
Food Warmers	41
Wind Guards	41
Refrigeration & Cooling	42
Alfresco Pizza Ovens	44
Alfresco Design Services	46
Artisan Grills	48
Features & Benefits	50
Built-In and Cart Grills	54
Artisan Grill Accessories	61
Warranty	64
Terms and Conditions	68



ALFRESCO GRILL FEATURES AND BENEFITS



EZ-Lift™ Exclusive Hood-Assist System

Unique integrated and hidden spiral torsion system made of non-corrosive stainless steel for many years of use. Handle spins smoothly in nickle-plated end caps for optimal comfort.



Stainless Steel Controls

Stainless Steel push button ignition, lighting, and rotisserie, controls are ergonomically integrated into the front control panel.



Safetouch™ Exclusive Control Panel Air Cooling Curtain

A special air-cooling plenum blasts a curtain of cool air that naturally flows up between the front control panel and firebox keeping front panel and bullnose safely cool to touch. This also protects all the electronics.



Made In The U.S.A.

Made from all commercial-grade 304, 18-8 stainless steel, all helic-arc hand-welded seams with no mechanical fasteners.



Free Grill Cover

A grill cover included with each Alfresco Grill.



Free LP Tank Slide

Free Liquid Propane tank slide included with all cart grill models, excluding refrigerated units.



EXTERIOR



Fit and Finish

With hand polished accents, uniquely clean lines and all heli-arc welded seams, the beauty and the quality are in the details



Ergonomically Designed Control Knobs with Control Panel Lighting

Grill knobs have been redesigned with precision touch in mind. LED front panel lighting projects rich amber beams of light exactly where you need them.



Pull Out Drip Tray

Easy to clean pull out drip tray slides effortlessly on ball bearing slides



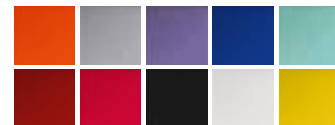
Full 2-Year Warranty

The Alfresco Grill Warranty covers all parts and labor for 2 years from date of purchase.



Now available in Color

Choose from 10 standard color options, or elevate your outdoor kitchen experience by choosing a custom RAL color for your backyard kitchen.



ALFRESCO GRILL FEATURES AND BENEFITS



Adjustable Food Warming and Grilling Rack

The three-position adjustable warming rack stores up and out of the way when rotissing. Ideal for above-grilling-surface holding and cooking.



Sear Zone™

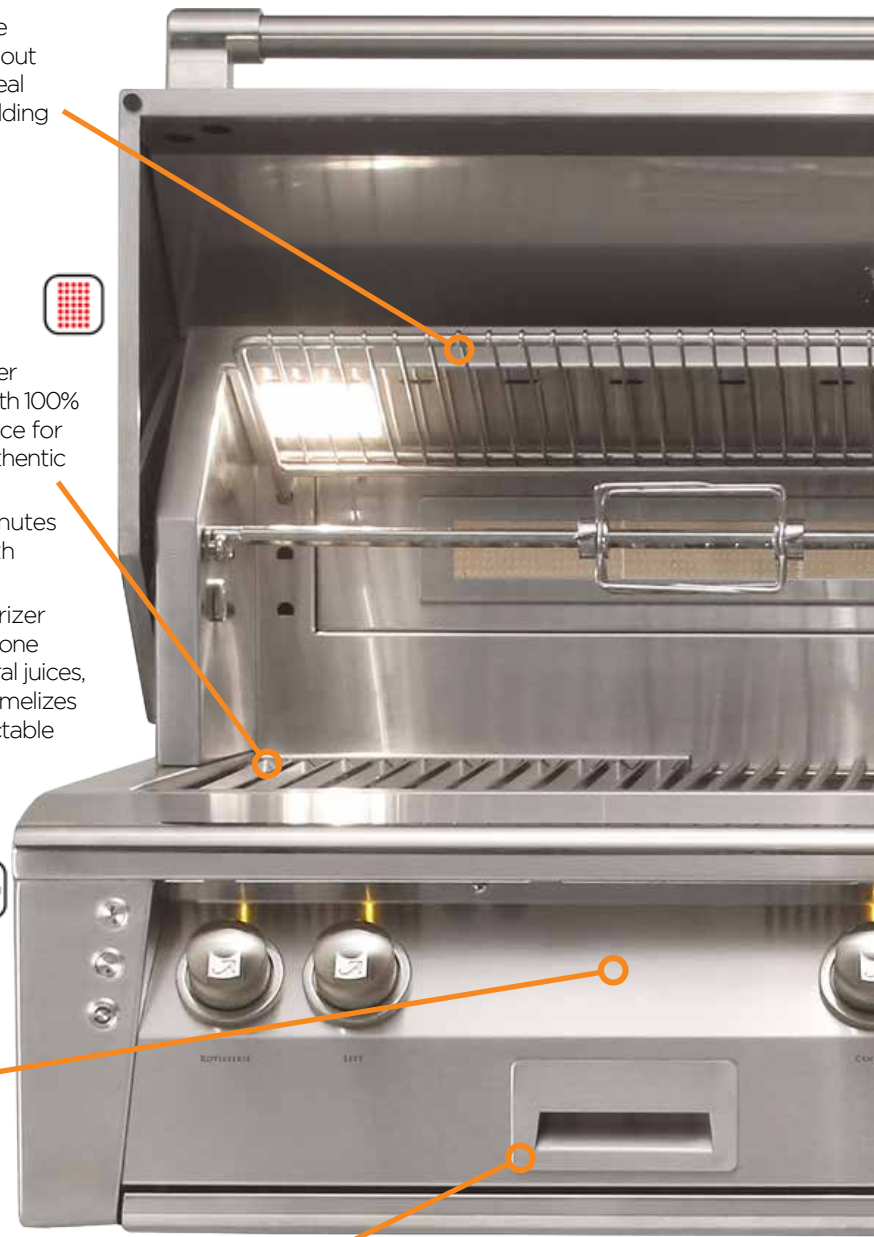
- Exclusive 1500° Infrared Technology
- 27,500 BTU Infrared Burner available on all LXE grills with 100% combusting ceramic surface for intense even heat and authentic steakhouse results
- Reaches 1500° in four minutes and cooks 50% faster with virtually no flare-ups
- Special "V-Shaped" flavorizer cooking grate over Sear Zone burner captures the natural juices, fats, and flavors, then caramelizes them to the food for delectable mouthwatering flavor



Accufire™ Exclusive Heat Delivery System

Delivers evenly distributed extreme high -heat to the cooking surface, and consists of special 18SR burners

- 27,500 BTUs
- 18SR (Scaling and Corrosion Resistant) made from titanium and stainless steel
- Exclusive design: Dual Rows of clean-combusting, double-lanced ports on three sides, plus crossover tube in front delivering optimal flame distribution
- Lifetime warranty

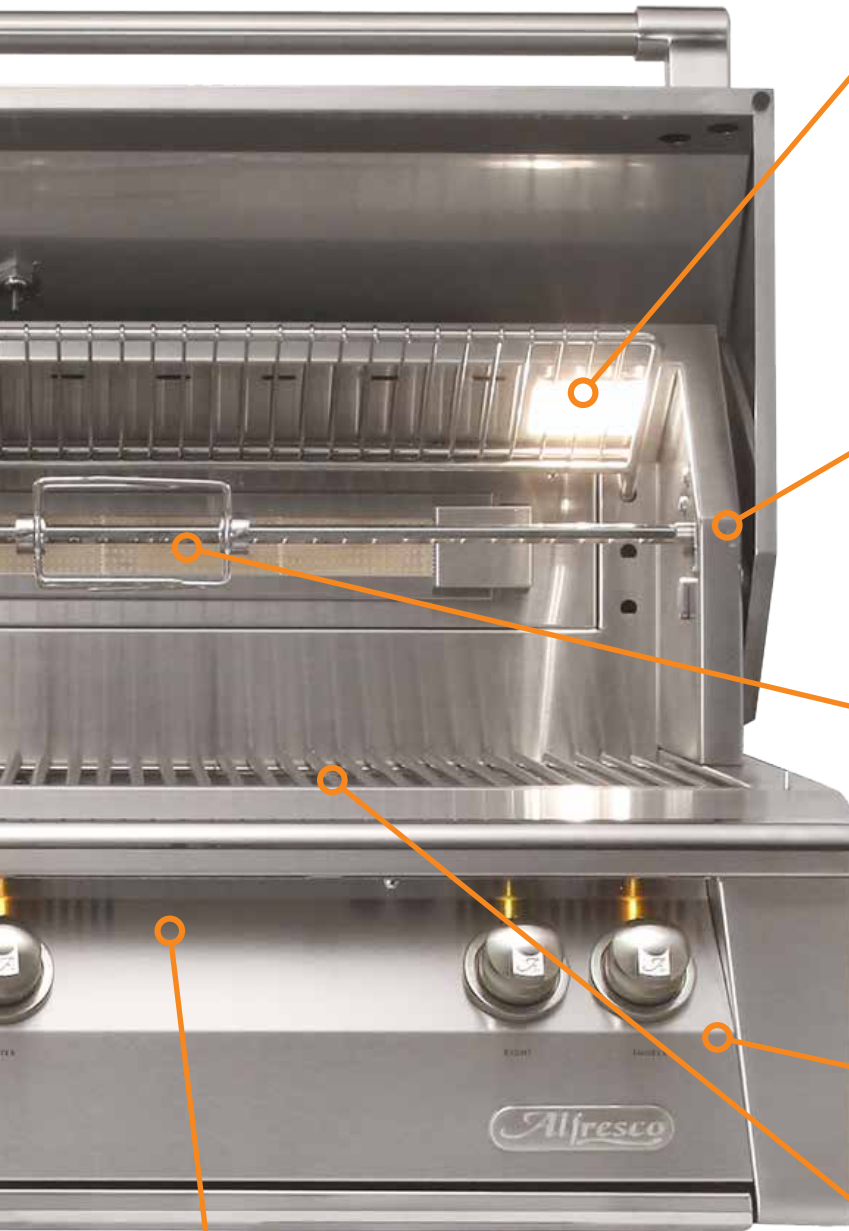


Signature Taste™ Integrated, Wood Smoker & Herb Infusion System



Dedicated 5,000 BTU stainless steel burner. Exclusive cold smoke capabilities. Drawer holds large chunks of wood, and linear defusing vents naturally eject smoke at 200° to food zone.

INTERIOR



Halogen Radiant Lighting

Integrated high-Intensity Halogen Work Lights angle slightly toward the center for bright, even illumination. Light lens is easily removable without the use of tools for easily changing bulbs, and cleaning.



Exclusive Hidden & Integrated 120lb. Torque Mega-Drive™ Rotisserie Motor



This unique chain-driven whisper quiet system turns food at a smooth and consistent speed no matter how many pounds. No counter balance required. Produces hassle-free delicious rotissied foods. Smoketiss™ using the smoke and herb infusion system.



Flush Inset Rotisserie

All Alfresco grills come with a flush-mounted 1500° rear ceramic infrared rotisserie burner.



Durasleeve™ Exclusive Heat Protected Wiring



Electrical wires are each encapsulated their full length with a 600° heat-resistance silicone sleeve, and electric connectors are protected with a silicone boot of same heat resistance silicone.



Refractive Ceramic 5-Way Heat Distributing Briquettes




Eliminate hot and cold spots making the effective grilling area 100% of the grilling surface. A special pyramid shape with a flat top and heat-holding cavity on underside evenly delivers intense heat to the cooking surface. Radiant tray locks briquettes in place. Turn tray over and fire burners on high with lid closed to self-clean.







Stainless Steel Cooking Grates

Over briquette and "U" burner sections. Heavy duty 3/8" round stainless steel rod cooking grates have a special nonstick electro-polished finish.

WHY CHOOSE ALFRESCO?

- 1** EZ-Lift™ Hood Assist System 

A cantilever canopy with a hidden coil spring assist offers ultra-smooth, single finger lifting and closing while you cook.
- 2** Powerful Even Heat Distribution   

SearZone™ and AccuFire™ produce 27,500 BTUs of power from each burner for a high-performance culinary experience.
- 3** Integrated Rotisserie Burner and Motor 

The flush-mounted rear rotisserie burner combined with the concealed Mega-Drive™ motor result in a system that supports the delicate touch required to create a perfectly tender and caramelized entrée.

- 4** 15 Ways to Cook

Only the Alfresco Outdoor Kitchen offers this many ways to cook!



Searing



Rotisserie Cooking



Grilling



Steaming



Boiling



Frying



Griddling



Smoking



Roasting



Baking



Braising



Wok Cooking





Blanching



Teppanyaki

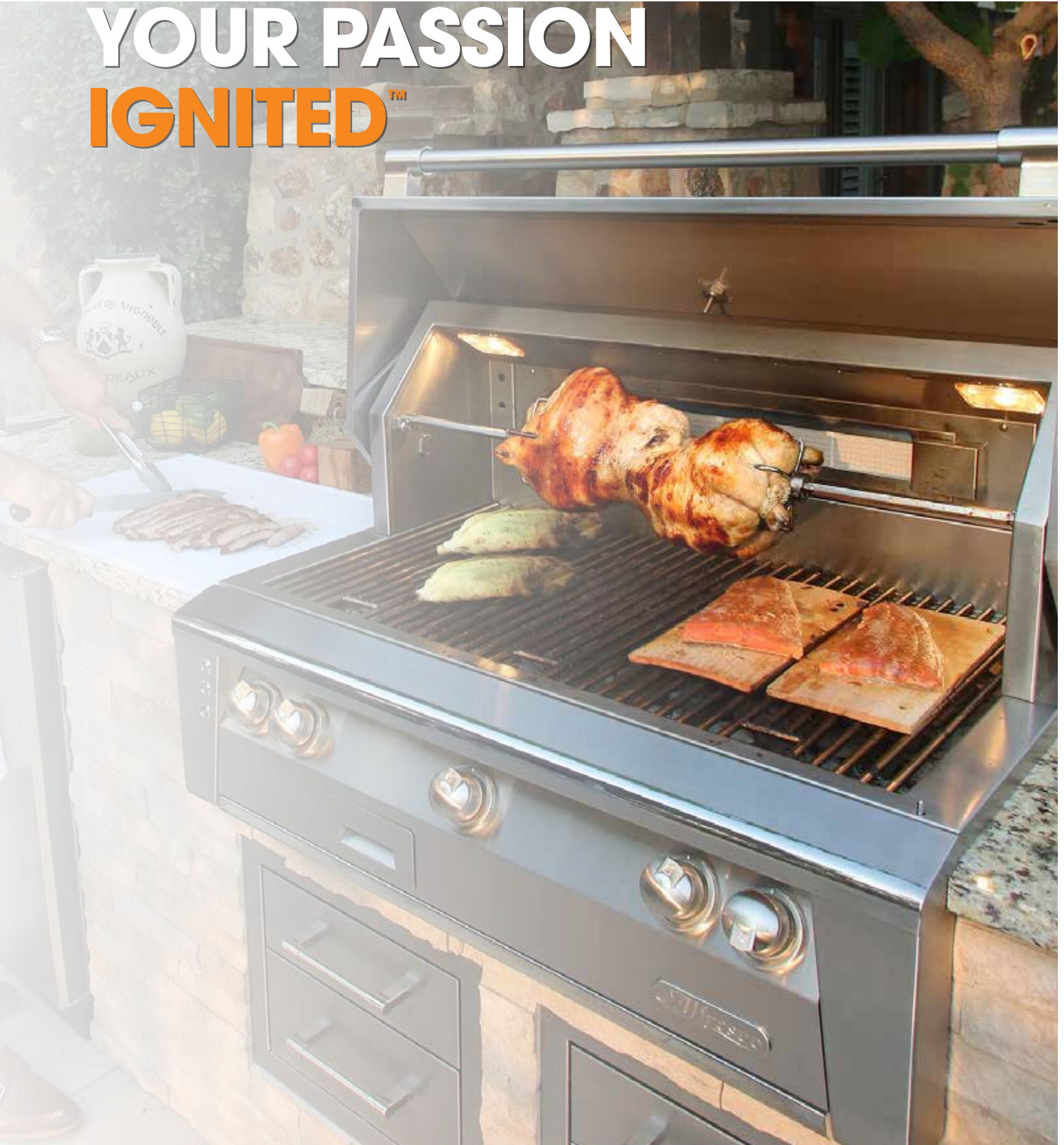


Cold Smoke Roasting

- 5** Made in the USA of 304 Stainless Steel that carries a Lifetime Warranty  

Proudly designed and manufactured in California of premium quality materials that are covered by our lifetime warranty.

YOUR PASSION IGNITED[™]





2005 Luminous Orange



7004 Signal Grey



4005 Blue Lilac



5002 Ultramarine Blue



6027 Light Green



3002 Carmine Red



3027 Raspberry Red



9005 Jet Black
(Matte or Gloss Finish)



9003 Signal White
(Matte or Gloss Finish)



1023 Traffic Yellow

YOUR PASSION IN COLOR

Alfresco is excited to introduce color to their famous ALXE assortment of outdoor cooking products and island accessories. Choose from ten standard color options, or elevate your outdoor cooking experience by choosing a custom RAL color for your backyard kitchen.

Lead times Standard: 6-8 weeks, Custom: 10-12 weeks.



How to Order:

1 Select Grill Model

2 Select Fuel Type
(NG or LP)

3 Select Color &
Add Color Charge**

Example: 42" Built-In Grill, Sear Zone, NG with Light Green Standard Color: **ALXE-42SZ-NG-S6027**

1 ALXE-42SZ

2 -NG

3 -S6027

-S2005

Luminous Orange

-S3027

Raspberry Red

-S7004

Signal Grey

-S1023

Traffic Yellow

-S4005

Blue Lilac

-S9005

Jet Black (Gloss)

-S5002

Ultramarine Blue

-SM9005

Jet Black (Matte)

-S6027

Light Green

-S9003

Signal White (Gloss)

-S3002

Carmin Red

-SM9003

Signal White (Matte)

-CXXXX*

Custom Color*

N/A

Stainless Steel

* For custom colors, use 4-digit RAL color code for requested color along with the "C" (custom) prefix for the item number

** See individual product pages for color product pricing

ALFRESCO BUILT-IN GRILLS



ALFRESCO 30" BUILT-IN GRILL

ALXE-30

Features

- Two 18-SR Stainless Steel Main Burners Producing 55,000 BTUs
- Integrated Rotisserie System with Built-In Motor and 15,000 BTU Infrared Burner
- Smoker System with 5,000 BTU Dedicated Burner and Drawer for Wood Chips or Herbs
- 542 sq. in. Actual Grilling Area
- 3-Position Warming Rack Stores Up and Out of the Way when Rotissing
- Dual Integrated High-Intensity Halogen Work Lights
- User-Friendly Push-Button Ignition with Sealed 110v AC Power Source
- Optional Infrared Sear Zone™
- Grill Cover Included
- 2 Year Full Warranty



MODEL	DESCRIPTION	UMRP/MAP
ALXE-30-LP	30" Built-In Grill, 2 Burner, Rotis, LP	\$ 5169
ALXE-30-NG	30" Built-In Grill, 2 Burner, Rotis, NG	\$ 5169
ALXE-30SZ-LP	30" Built-In Grill, 1 Burner, Rotis, Sear Zone, LP	\$ 5169
ALXE-30SZ-NG	30" Built-In Grill, 1 Burner, Rotis, Sear Zone, NG	\$ 5169

OPTIONS AND ACCESSORIES

MODEL	DESCRIPTION	UMRP/MAP
See Chart Pg 11**	30" Built-In Grills, Standard Colors	\$ 430
See Chart Pg 11**	30" Built-In Grills, Custom Colors	\$ 860
AIJ-30-01	Insulated Jacket for 30" Grill	\$ 829
AIC-POD	Indirect Roasting Pod	\$ 469
AG-SF	Grill Mounted Steamer/Fryer	\$ 745
SFI-POD	Solid Fuel Insert	\$ 865
AGSQ-G	Commercial Griddle	\$ 469
XE-30C	Standard Cart for 30" Grill	\$ 2,105
AGV-30	Vinyl Cover for 30" Built-In Grill - Replacement	\$ 135
AWS-30	Wind Guard for 30" Grill	\$ 455
190-0048	Conversion Kit for ALXE-30, NG to LP	\$ 68
190-0049	Conversion Kit for ALXE-30, LP to NG	\$ 68
220-0301	LP Hose and Regulator*	\$ 97

*For use when converting from NG to LP, required for use with a standard 5 gallon propane tank.

** Premium color pricing must be added to the price of the product

ALFRESCO 36" BUILT-IN GRILL ALXE-36



Features

- Three 18-SR Stainless Steel Main Burners Producing 82,500 BTUs
- Integrated Rotisserie System with Built-In Motor and 18,500 BTU Infrared Burner
- Smoker System with 5,000 BTU Dedicated Burner and Drawer for Wood Chips or Herbs
- 660 sq. in. Actual Grilling Area
- 3-Position Warming Rack Stores Up and Out of the Way when Rotissing
- Dual Integrated High Intensity Halogen Work Lights
- User-Friendly Push-Button Ignition with Sealed 110v AC Power Source
- Optional Infrared Sear Zone™
- Grill Cover Included
- 2 Year Full Warranty

MODEL	DESCRIPTION	UMRP/MAP
ALXE-36-LP	36" Built-In Grill, 3 Burner, Rotis, LP	\$ 7,079
ALXE-36-NG	36" Built-In Grill, 3 Burner, Rotis, NG	\$ 7,079
ALXE-36SZ-LP	36" Built-In Grill, 2 Burner, Rotis, Sear Zone, LP	\$ 7,079

OPTIONS AND ACCESSORIES

MODEL	DESCRIPTION	UMRP/MAP
See Chart Pg 11**	36" Built-In Grills, Standard Colors	\$ 430
See Chart Pg 11**	36" Built-In Grills, Custom Colors	\$ 860
XE-36AG	Insert Accessory Grate and Briquette Tray for 36" Grill	\$ 49
AIC-POD	Indirect Roasting Pod	\$ 469
AG-SF	Grill Mounted Steamer/Fryer	\$ 745
SFI-POD	Solid Fuel Insert	\$ 865
AGSQ-G	Commercial Griddle	\$ 469
AIJ-36	Insulated Jacket for 36" Grill	\$ 869
XE-36C	Standard Cart for 36" Grill	\$ 2,419
AGV-36	Vinyl Cover for 36" Built-In Grill - Replacement	\$ 149
AWS-36	Wind Guard for 36" Grill	\$ 515
190-0057	Conversion Kit for ALXE-36, NG to LP	\$ 84
190-0058	Conversion Kit for ALXE-36, LP to NG	\$ 88
220-0301	LP Hose and Regulator*	\$ 97

*For use when converting from NG to LP, required for use with a standard 5 gallon propane tank.

** Premium color pricing must be added to the price of the product

ALFRESCO 42" BUILT-IN GRILL

ALXE-42

Features

- Three 18-SR Stainless Steel Main Burners Producing 82,500 BTUs
- Integrated Rotisserie System with Built-In Motor and Dual 18,500 BTU Infrared Burner
- Smoker System with 5,000 BTU Dedicated Burner and Drawer for Wood Chips or Herbs
- 770 sq. in. Actual Grilling Area
- 3-Position Warming Rack Stores Up and Out of the Way when Rotissing
- Dual Integrated High-Intensity Halogen Work Lights
- User-Friendly Push-Button Ignition with Sealed 110v AC Power Source
- Optional Infrared Sear Zone™
- Grill Cover Included
- 2 Year Full Warranty



MODEL	DESCRIPTION	UMRP/MAP
ALXE-42-LP	42" Built-In Grill, 3 Burner, Rotis, LP	\$ 7,885
ALXE-42-NG	42" Built-In Grill, 3 Burner, Rotis, NG	\$ 7,885
ALXE-42SZ-LP	42" Built-In Grill, 2 Burner, Rotis, Sear Zone, LP	\$ 7,885
ALXE-42SZ-NG	42" Built-In Grill, 2 Burner, Rotis, Sear Zone, NG	\$ 7,885

OPTIONS AND ACCESSORIES

MODEL	DESCRIPTION	UMRP/MAP
See Chart Pg 11**	42" Built-In Grills, Standard Colors	\$ 540
See Chart Pg 11**	42" Built-In Grills, Custom Colors	\$ 1080
AIC-POD	Indirect Roasting Pod	\$ 469
AG-SF	Grill Mounted Steamer/Fryer	\$ 745
SFI-POD	Solid Fuel Insert	\$ 865
AGSQ-G	Commercial Griddle	\$ 469
AIJ-42	Insulated Jacket for 42" Grill	\$ 905
XE-42C	Standard Cart for 42" Grill	\$ 2,689
XE-42CD	Deluxe Cart for 42" Grill	\$ 2,989
AGV-42	Vinyl Cover for 42" Grill - Replacement	\$ 169
AWS-42	Wind Guard for 42" Grill	\$ 569
190-0050	Conversion Kit for ALXE-42, NG to LP	\$ 86
190-0051	Conversion Kit for ALXE-42, LP to NG	\$ 86
220-0301	LP Hose and Regulator*	\$ 97

*For use when converting from NG to LP, required for use with a standard 5 gallon propane tank.

** Premium color pricing must be added to the price of the product

ALFRESCO 56" BUILT-IN DELUXE GRILL ALXE-56



Features

- Three 18-SR Stainless Steel Main Burners Producing 82,500 BTUs
- Integrated Rotisserie System with Built-In Motor and 18,500 BTU Infrared Burner
- Smoker System with 5,000 BTU Dedicated Burner and Drawer for Wood Chips or Herbs
- 770 sq. in. Actual Grilling Area
- 3-Position Warming Rack Stores Up and Out of the Way when Rotissing
- Dual Integrated 20,000 BTU Side Burner with Recessed, Sealed Top and Stainless Steel Cover
- User-Friendly Push-Button Ignition with Sealed 110v AC Power Source
- Optional Infrared Sear Zone™
- Grill Cover Included
- 2 Year Full Warranty

MODEL	DESCRIPTION	UMRP/MAP
ALXE-56-LP	56" Built-In Grill, 3 Burner, Rotis, LP	\$ 9,439
ALXE-56-NG	56" Built-In Grill, 3 Burner, Rotis, NG	\$ 9,439
ALXE-56SZ-LP	56" Built-In Grill, 2 Burner, Rotis, Sear Zone, LP	\$ 9,439
ALXE-56SZ-NG	56" Built-In Grill, 2 Burner, Rotis, Sear Zone, NG	\$ 9,439

OPTIONS AND ACCESSORIES

MODEL	DESCRIPTION	UMRP/MAP
See Chart Pg 11**	56" Built-In Grills, Standard Colors	\$ 540
See Chart Pg 11**	56" Built-In Grills, Custom Colors	\$ 1080
AIC-POD	Indirect Roasting Pod	\$ 469
AG-SF	Grill Mounted Steamer/Fryer	\$ 745
SFI-POD	Solid Fuel Insert	\$ 865
AGSQ-G	Commercial Griddle	\$ 469
AIJ-56	Insulated Jacket for 56" Grill	\$ 979
XE-56C	Deluxe Cart for 56" Grill	\$ 3,335
AGV-56	Vinyl Cover for 56" Grill - Replacement	\$ 169
AWS-56	Wind Guard for 56" Built-In Grill	\$ 659
190-0050	Conversion Kit for ALXE-56, NG to LP	\$ 86
190-0051	Conversion Kit for ALXE-56, LP to NG	\$ 86
220-0300	LP Hose and Regulator*	\$ 97

*For use when converting from NG to LP, required for use with a standard 5 gallon propane tank.

** Premium color pricing must be added to the price of the product

ALFRESCO 56" BUILT-IN ALL GRILL ALXE-56BFG

Features

- Three 18-SR Stainless Steel Main Burners Producing 82,500 BTUs
- Sear Zone with 27,500 BTU Ceramic Infrared Burner
- Integrated Rotisserie System with Built-In Motor and Dual 15,000 BTU Infrared Burners
- Smoker System with 5,000 BTU Dedicated Burner and Drawer for Wood Chips or Herbs
- 998 sq. in. Actual Grilling Area
- 3-Position Warming Rack Stores Up and Out of the Way when Rotissing
- Dual Integrated High-Intensity Halogen Work Lights
- User-Friendly Push-Button Ignition with Sealed 110v AC Power Source
- Grill Cover Included
- 2 Year Full Warranty



MODEL	DESCRIPTION	UMRP/MAP
ALXE-56BFG-LP	56" Built-In Grill, 3 Burner, Rotis, Sear Zone, LP	\$ 10,969
ALXE-56BFG-NG	56" Built-In Grill, 3 Burner, Rotis, Sear Zone, NG	\$ 10,969

OPTIONS AND ACCESSORIES

MODEL	DESCRIPTION	UMRP/MAP
See Chart Pg 11**	56" Built-In Grills, Standard Colors	\$ 540
See Chart Pg 11**	56" Built-In Grills, Custom Colors	\$ 1080
AIC-POD	Indirect Roasting Pod	\$ 469
AG-SF	Grill Mounted Steamer/Fryer	\$ 745
SFI-POD	Solid Fuel Insert	\$ 865
AGSQ-G	Commercial Griddle	\$ 469
AIJ-56	Insulated Jacket for 56" Grill	\$ 979
AGV-56BFG	Jumbo Vinyl Cover for 56" Built-In All Grill - Replacement	\$ 169
AWS-56	Wind Guard for 56" Grill	\$ 659
190-0052	Conversion Kit for ALXE-56BFG, NG to LP	\$ 93
190-0053	Conversion Kit for ALXE-56BFG, LP to NG	\$ 99
220-0300	LP Hose and Regulator*	\$ 154

*For use when converting from NG to LP, required for use with a standard 5 gallon propane tank.

** Premium color pricing must be added to the price of the product

ALFRESCO CART GRILLS



ALFRESCO 30" CART GRILL ALXE-30C

Features

- Two 18-SR Stainless Steel Main Burners Producing 55,000 BTUs
- Integrated Rotisserie System with Built-In Motor and 15,000 BTU Infrared Burner
- Smoker System with 5,000 BTU Dedicated Burner and Drawer for Wood Chips or Herbs
- 542 sq. in. Actual Grilling Area
- 3-Position Warming Rack Stores Up and Out of the Way when Rotissing
- Dual Integrated High-Intensity Halogen Work Lights
- User-Friendly Push-Button Ignition with Sealed 110v AC Power Source
- LP Tank Slide Included
- Optional Infrared Sear Zone™
- Grill Cover Included
- 2 Year Full Warranty



MODEL	DESCRIPTION	UMRP/MAP
ALXE-30C-LP	30" Cart Grill, 2 Burner, Rotis, Double Doors, LP	\$ 6,085
ALXE-30C-NG	30" Cart Grill, 2 Burner, Rotis, Double Doors, NG	\$ 6,085
ALXE-30SZC-LP	30" Cart Grill, 1 Burner, Rotis, Sear Zone, Double Doors, LP	\$ 6,085
ALXE-30SZC-NG	30" Cart Grill, 1 Burner, Rotis, Sear Zone, Double Doors, NG	\$ 6,085

OPTIONS AND ACCESSORIES

MODEL	DESCRIPTION	UMRP/MAP
See Chart Pg 11**	30" Cart Grills, Standard Colors	\$ 1,080
See Chart Pg 11**	30" Cart Grills, Custom Colors	\$ 2,160
AXESB-2C-LP	Dual Side Burner for Cart, LP	\$ 1,865
AXESB-2C-NG	Dual Side Burner for Cart, NG	\$ 1,865
AIC-POD	Indirect Roasting Pod	\$ 469
AG-SF	Grill Mounted Steamer/Fryer	\$ 745
SFI-POD	Solid Fuel Insert	\$ 865
AGSQ-G	Commercial Griddle	\$ 469
AGV-30C	Vinyl Cover for 30" Grill - Replacement	\$ 145
AGV-30CSB	Vinyl Cover for 30" Cart Grill + Side Burner - Replacement	\$ 149
AWS-30	Wind Guard for 30" Grill	\$ 455
AWS-30C	Wind Guard for 30" Cart Grill	\$ 545
190-0048	Conversion Kit for ALXE-30, NG to LP	\$ 68
190-0049	Conversion Kit for ALXE-30, LP to NG	\$ 68
220-0301	LP Hose and Regulator*	\$ 97

*For use when converting from NG to LP, required for use with a standard 5 gallon propane tank.

** Premium color pricing must be added to the price of the product

ALFRESCO 36" CART GRILL ALXE-36C



Features

- Three 18-SR Stainless Steel Main Burners Producing 82,500 BTUs
- Integrated Rotisserie System with Built-In Motor and 18,500 BTU Infrared Burner
- Smoker System with 5,000 BTU Dedicated Burner and Drawer for Wood Chips or Herbs
- 660 sq. in. Actual Grilling Area
- 3-Position Warming Rack Stores Up and Out of the Way when Rotissing
- Dual Integrated High Intensity Halogen Work Lights
- User-Friendly Push-Button Ignition with Sealed 110v AC Power Source
- LP Tank Slide Included
- Optional Infrared Sear Zone™
- Grill Cover Included
- 2 Year Full Warranty

MODEL	DESCRIPTION	UMRP/MAP
ALXE-36C-LP	36" Cart Grill, 3 Burner, Rotis, Double Doors, LP	\$ 9,065
ALXE-36C-NG	36" Cart Grill, 3 Burner, Rotis, Double Doors, NG	\$ 9,065
ALXE-36SZC-LP	36" Cart Grill, 2 Burner, Rotis, Sear Zone, Double Doors, LP	\$ 9,065
ALXE-36SZC-NG	36" Cart Grill, 2 Burner, Rotis, Sear Zone, Double Doors, NG	\$ 9,065

OPTIONS AND ACCESSORIES

MODEL	DESCRIPTION	UMRP/MAP
See Chart Pg 11**	36" Cart Grills, Standard Colors	\$ 1,080
See Chart Pg 11**	36" Cart Grills, Custom Colors	\$ 2,160
AXESB-2C-LP	Dual Side Burner for Cart, LP	\$ 1,865
AXESB-2C-NG	Dual Side Burner for Cart, NG	\$ 1,865
AIC-POD	Indirect Roasting Pod	\$ 469
AG-SF	Grill Mounted Steamer/Fryer	\$ 745
SFI-POD	Solid Fuel Insert	\$ 865
AGSQ-G	Commercial Griddle	\$ 469
AGV-36C	Vinyl Cover for 36" Cart Grill - Replacement	\$ 159
AGV-36CSB	Vinyl Cover for 36" Grill Cart + Side Burner - Replacement	\$ 159
AWS-36	Wind Guard for 36" Grill	\$ 515
AWS-36C	Wind Guard for 36" Cart Grill	\$ 569
XE-36AG	Insert Accesory Grate and Briquette Tray for 36" Grill	\$ 49
190-0057	Conversion Kit for ALXE-36, NG to LP	\$ 84
190-0058	Conversion Kit for ALXE-36, LP to NG	\$ 84
220-0301	LP Hose and Regulator*	\$ 97

*For use when converting from NG to LP, required for use with a standard 5 gallon propane tank.

** Premium color pricing must be added to the price of the product

ALFRESCO 42" CART GRILL

Features

- Three 18-SR Stainless Steel Main Burners Producing 82,500 BTUs
- Integrated Rotisserie System with Built-In Motor and Dual 18,500 BTU Infrared Burners
- Smoker System with 5,000 BTU Dedicated Burner and Drawer for Wood Chips or Herbs
- 770 sq. in. Actual Grilling Area
- 3-Position Warming Rack Stores Up and Out of the Way when Rotissing
- Dual Integrated High-Intensity Halogen Work Lights
- User-Friendly Push-Button Ignition with Sealed 110v AC Power Source
- LP Tank Slide Included
- Optional Infrared Sear Zone™ and Refrigerated Base Cabinet (See Next Page)
- Grill Cover Included
- 2 Year Full Warranty



Deluxe Cart

MODEL	DESCRIPTION	UMRP/MAP
ALXE-42C-LP	42" Cart Grill, 3 Burner, Rotis, Double Doors, LP	\$ 9,809
ALXE-42C-NG	42" Cart Grill, 3 Burner, Rotis, Double Doors, NG	\$ 9,809
ALXE-42CD-LP	42" Cart Grill, Rotis, 3 Burner, Deluxe Cart, LP	\$ 10,185
ALXE-42CD-NG	42" Cart Grill, Rotis, 3 Burner, Deluxe Cart, NG	\$ 10,185
ALXE-42SZC-LP	42" Cart Grill, Rotis, 2 Burner, Sear Zone, Double Doors, LP	\$ 9,809
ALXE-42SZC-NG	42" Cart Grill, Rotis, 2 Burner, Sear Zone, Double Doors, NG	\$ 9,809
ALXE-42SZCD-LP	42" Cart Grill, 2 Burner, Rotis, Sear Zone, Deluxe Cart, LP	\$ 10,185
ALXE-42SZCD-NG	42" Cart Grill, 2 Burner, Rotis, Sear Zone, Deluxe Cart, NG	\$ 10,185

OPTIONS AND ACCESSORIES

MODEL	DESCRIPTION	UMRP/MAP
See Chart Pg 11**	42" Cart Grills, Standard Colors	\$ 1,300
See Chart Pg 11**	42" Cart Grills, Custom Colors	\$ 2,590
AXESB-2C-LP	Dual Side Burner for Cart, LP	\$ 1,865
AXESB-2C-NG	Dual Side Burner for Cart, NG	\$ 1,865
AIC-POD	Indirect Roasting Pod	\$ 469
AG-SF	Grill Mounted Steamer/Fryer	\$ 745
SFI-POD	Solid Fuel Insert	\$ 865
AGSQ-G	Commercial Griddle	\$ 469
AGV-42C	Vinyl Cover for 42" Cart Grill - Replacement	\$ 169
AGV-42CSB	Vinyl Cover for 42" Cart Grill & Side Burner - Replacement	\$ 169
AWS-42	Wind Guard for 42" Grill	\$ 569
AWS-42C	Wind Guard for 42" Cart Grill	\$ 685
190-0050	Conversion Kit for ALXE-42, NG to LP	\$ 86
190-0051	Conversion Kit for ALXE-42, LP to NG	\$ 86
220-0301	LP Hose and Regulator*	\$ 97

*For use when converting from NG to LP, required for use with a standard 5 gallon propane tank.

** Premium color pricing must be added to the price of the product

ALFRESCO 42" REFRIGERATED CART GRILL ALXE-42RFG



Features

- Three 18-SR Stainless Steel Main Burners Producing 82,500 BTUs
- Integrated Rotisserie System with Built-In Motor and Dual 18,500 BTU Infrared Burners
- Smoker System with 5,000 BTU Dedicated Burner and Drawer for Wood Chips or Herbs
- 770 sq. in. Actual Grilling Area
- 3-Position Warming Rack Stores Up and Out of the Way when Rotissing
- Dual Integrated High-Intensity Halogen Work Lights
- User-Friendly Push-Button Ignition with Sealed 110v AC Power Source
- Cart model features Refrigerated Doors & Drawers
- Optional Infrared Sear Zone™
- Grill Cover Included
- 2 Year Full Warranty

MODEL	DESCRIPTION	UMRP/MAP
ALXE-42RFG-LP	42" Cart Grill, 3 Burner, Rotis, Single Door, Double Drawer, LP	\$ 15,519
ALXE-42RFG-NG	42" Cart Grill, 3 Burner, Rotis, Single Door, Double Drawer, NG	\$ 15,519
ALXE-42SZRFG-LP	42" Cart Grill, 2 Burner, Rotis, Sear Zone, Single Door, Double Drawer, LP	\$ 15,519
ALXE-42SZRFG-NG	42" Cart Grill, 2 Burner, Rotis, Sear Zone, Single Door, Double Drawer, NG	\$ 15,519

OPTIONS AND ACCESSORIES

MODEL	DESCRIPTION	UMRP/MAP
See Chart Pg 11**	42" Cart Grills, Standard Colors	\$ 1,296
See Chart Pg 11**	42" Cart Grills, Custom Colors	\$ 2592
AXESB-2C-LP	Dual Side Burner for Cart, LP	\$ 1,865
AXESB-2C-NG	Dual Side Burner for Cart, NG	\$ 1,865
AIC-POD	Indirect Roasting Pod	\$ 469
AG-SF	Grill Mounted Steamer/Fryer	\$ 745
SFI-POD	Solid Fuel Insert	\$ 865
AGSQ-G	Commercial Griddle	\$ 469
AGV-42C	Vinyl Cover for 42" Cart Grill - Replacement	\$ 169
AGV-42CSB	Vinyl Cover for 42" Cart Grill & Side Burner - Replacement	\$ 169
AWS-42	Wind Guard for 42" Grill	\$ 569
AWS-42C	Wind Guard for 42" Cart Grill	\$ 685
190-0050	Conversion Kit for ALXE-42, NG to LP	\$ 86
190-0051	Conversion Kit for ALXE-42, LP to NG	\$ 86
220-0301	LP Hose and Regulator*	\$ 97

*For use when converting from NG to LP, required for use with a standard 5 gallon propane tank.

** Premium color pricing must be added to the price of the product

ALFRESCO 56" CART GRILL ALXE-56C

Features

- Three 18-SR Stainless Steel Main Burners Producing 82,500 BTUs
- Integrated Rotisserie System with Built-In Motor and 18,500 BTU Infrared Burner
- Smoker System with 5,000 BTU Dedicated Burner and Drawer for Wood Chips or Herbs
- 770 sq. in. Actual Grilling Area
- 3-Position Warming Rack Stores Up and Out of the Way when Rotissing
- Dual Integrated High Intensity Halogen work Lights
- Dual Integrated 20,000 BTU Side Burner with Recessed, Sealed Top and Stainless Steel Cover
- User-Friendly Push-Button Ignition with Sealed 110v AC Power Source
- Cart Model Features Dual Storage Drawers
- LP Tank Slide Included
- Optional Infrared Sear Zone™ and Refrigerated Base Cabinet (See Page 20)
- Grill Cover Included
- 2 Year Full Warranty



MODEL	DESCRIPTION	UMRP/MAP
ALXE-56C-LP	56" Cart Grill, 3 Burner, Side Burner, Rotis, Double Doors, Double Drawers, LP	\$ 13,165
ALXE-56C-NG	56" Cart Grill, 3 Burner, Side Burner, Rotis, Double Doors, Double Drawers, NG	\$ 13,165
ALXE-56SZC-LP	56" Cart Grill, 2 Burner, Side Burner, Rotis, Sear Zone, Double Doors, Double Drawers, LP	\$ 13,165
ALXE-56SZC-NG	56" Cart Grill, 2 Burner, Side Burner, Rotis, Sear Zone, Double Doors, Double Drawers, NG	\$ 13,165

OPTIONS AND ACCESSORIES

MODEL	DESCRIPTION	UMRP/MAP
See Chart Pg 11**	56" Cart Grills, Standard Colors	\$ 1,510
See Chart Pg 11**	56" Cart Grills, Custom Colors	\$ 3,024
AIC-POD	Indirect Roasting Pod	\$ 469
AG-SF	Grill Mounted Steamer/Fryer	\$ 745
SFI-POD	Solid Fuel Insert	\$ 865
AGSQ-G	Commercial Griddle	\$ 469
AGV-56C	Vinyl Cover for 56" Cart Grill - Replacement	\$ 179
AWS-56	Wind Guard for 56" Grill	\$ 659
AWS-56C	Wind Guard for 56" Cart Grill	\$ 789
190-0050	Conversion Kit for ALXE-56, NG to LP	\$ 86
190-0051	Conversion Kit for ALXE-56, LP to NG	\$ 86
220-0300	LP Hose and Regulator*	\$ 154

*For use when converting from NG to LP, required for use with a standard 5 gallon propane tank.

** Premium color pricing must be added to the price of the product

ALFRESCO 56" CART ALL GRILL ALXE-56BFGC



Features

- Three 18-SR Stainless Steel Main Burners Producing 82,500 BTUs
- Sear Zone™ with 27,500 BTU Ceramic Infrared Burner
- Integrated Rotisserie System with Built-In Motor and Dual 15,000 BTU Infrared Burners
- Smoker System with 5,000 BTU Dedicated Burner and Drawer for Wood Chips or Herbs
- 998 sq. in. Actual Grilling Area
- 3-Position Warming Rack Stores Up and Out of the Way when Rotissing
- Dual Integrated High-Intensity Halogen Work Lights
- User-Friendly Push-Button Ignition with Sealed 110v AC Power Source
- Cart Model Features Dual Storage Drawers
- LP Tank Slide Included
- Optional Refrigerated Base Cabinet (See Page 21)
- Grill Cover Included
- 2 Year Full Warranty

MODEL	DESCRIPTION	UMRP/MAP
ALXE-56BFGC-LP	56" Cart Grill, 3 Burner, Rotis, Sear Zone, Double Doors, Double Drawers, LP	\$ 13,765
ALXE-56BFGC-NG	56" Cart Grill, 3 Burner, Rotis, Sear Zone, Double Doors, Double Drawers, NG	\$ 13,765

OPTIONS AND ACCESSORIES

MODEL	DESCRIPTION	UMRP/MAP
See Chart Pg 11**	56" Cart Grills, Standard Colors	\$ 1,514
See Chart Pg 11**	56" Cart Grills, Custom Colors	\$ 3,024
AXESB-2C-LP	Dual Side Burner for Cart, LP	\$ 1,865
AXESB-2C-NG	Dual Side Burner for Cart, NG	\$ 1,865
AIC-POD	Indirect Roasting Pod	\$ 469
AG-SF	Grill Mounted Steamer/Fryer	\$ 745
SFI-POD	Solid Fuel Insert	\$ 865
AGSQ-G	Commercial Griddle	\$ 469
AGV-56BFGC	Vinyl Cover for 56" BFG Cart Grill- Replacement	\$ 179
AWS-56	Wind Guard for 56" Grill	\$ 659
AWS-56C	Wind Guard for 56" Cart Grill	\$ 789
190-0052	Conversion Kit for ALXE-56BFG, NG to LP	\$ 93
190-0053	Conversion Kit for ALXE-56BFG, LP to NG	\$ 99
220-0300	LP Hose and Regulator*	\$ 154

*For use when converting from NG to LP, required for use with a standard 5 gallon propane tank.

** Premium color pricing must be added to the price of the product

ALFRESCO 56" REFRIGERATED CART GRILL

ALXE-56R

Features

- Three 18-SR Stainless Steel Main Burners Producing 82,500 BTUs
- Sear Zone™ with 27,500 BTU Ceramic Infrared Burner
- Integrated Rotisserie System with Built-In Motor and 18,500 BTU Infrared Burner
- Smoker System with 5,000 BTU Dedicated Burner and Drawer for Wood Chips or Herbs
- 770 sq. in. Actual Grilling Area
- 3-Position Warming Rack Stores Up and Out of the Way when Rotissing
- Dual Integrated High-Intensity Halogen Work Lights
- Dual Integrated 20,000 BTU Side Burner with Recessed, Sealed Top and Stainless Steel Cover
- User-Friendly Push-Button Ignition with Sealed 110v AC Power Source
- Cart Model Features Refrigerated Doors & Drawers
- Optional Infrared Sear Zone



- Grill Cover Included
- 7.25 Cuft Under Grill Refrigerator
- Dual Marinating Drawers with Removable Pans
- Front Breathing for Optimal Performance
- 2 Year Full Warranty

MODEL	DESCRIPTION	UMRP/MAP
ALXE-56R-LP	56" Cart Grill, 3 Burner, Rotis, Single Door, Double Drawer, LP	\$ 17,915
ALXE-56R-NG	56" Cart Grill, 3 Burner, Rotis, Single Door, Double Drawer, NG	\$ 17,915
ALXE-56SZR-LP	56" Cart Grill, 2 Burner, Side Burner, Rotis, Double Door, Double Drawer, Sear Zone, LP	\$ 17,915
ALXE-56SZR-NG	56" Cart Grill, 2 Burner, Side Burner, Rotis, Double Door, Double Drawer, Sear Zone, NG	\$ 17,915

OPTIONS AND ACCESSORIES

MODEL	DESCRIPTION	UMRP/MAP
See Chart Pg 11**	56" Cart Grills, Standard Colors	\$ 1,514
See Chart Pg 11**	56" Cart Grills, Custom Colors	\$ 3,024
AIC-POD	Indirect Roasting Pod	\$ 469
AG-SF	Grill Mounted Steamer/Fryer	\$ 745
SFI-POD	Solid Fuel Insert	\$ 865
AGSQ-G	Commercial Griddle	\$ 469
AGV-56C	Vinyl Cover for 56" Cart Grill - Replacement	\$ 179
AWS-56	Wind Guard for 56" Grill	\$ 659
AWS-56C	Wind Guard for 56" Cart Grill	\$ 789
190-0050	Conversion Kit for ALXE-56, NG to LP	\$ 86
190-0051	Conversion Kit for ALXE-56, LP to NG	\$ 86
220-0300	LP Hose and Regulator*	\$ 154 \$ 154

*For use when converting from NG to LP, required for use with a standard 5 gallon propane tank.

** Premium color pricing must be added to the price of the product

ALFRESCO 56" REFRIGERATED CART GRILL ALXE-56BFGR



Features

- Three 18-SR Stainless Steel Main Burners Producing 82,500 BTUs
- Sear Zone™ with 27,500 BTU Ceramic Infrared Burner
- Integrated Rotisserie System with Built-In Motor and Dual 15,000 BTU Infrared Burners
- Smoker System with 5,000 BTU Dedicated Burner and Drawer for Wood Chips or Herbs
- 998 sq. in. Actual Grilling Area
- 3-Position Warming Rack Stores Up and Out of the Way when Rotissing
- Dual Integrated High-Intensity Halogen Work Lights
- User-Friendly Push-Button Ignition with Sealed 110v AC Power Source
- Cart Model Features Refrigerated Doors & Drawers
- Grill Cover Included
- 7.25 Cuft Under Grill Refrigerator
- Dual Marinating Drawers with Removable Pans
- Front Breathing for Optimal Performance
- 2 Year Full Warranty

MODEL	DESCRIPTION	UMRP/MAP
ALXE-56BFGR-LP	56" Cart Grill, 3 Burner, Rotis, Double Door, Double Drawer, Sear Zone, LP	\$ 19,169
ALXE-56BFGR-NG	56" Cart Grill, 3 Burner, Rotis, Double Door, Double Drawer, Sear Zone, NG	\$ 19,169

OPTIONS AND ACCESSORIES

MODEL	DESCRIPTION	UMRP/MAP
See Chart Pg 11**	56" Cart Grills, Standard Colors	\$ 1,510
See Chart Pg 11**	56" Cart Grills, Custom Colors	\$ 3,026
AXESB-2C-LP	Dual Side Burner for Cart, LP	\$ 1,865
AXESB-2C-NG	Dual Side Burner for Cart, NG	\$ 1,865
AIC-POD	Indirect Roasting Pod	\$ 469
AG-SF	Grill Mounted Steamer/Fryer	\$ 745
SFI-POD	Solid Fuel Insert	\$ 865
AGSQ-G	Commercial Griddle	\$ 469
AGV-56BFGC	Vinyl Cover for 56" BFG Cart Grill- Replacement	\$ 179
AWS-56	Wind Guard for 56" Grill	\$ 659
AWS-56C	Wind Guard for 56" Cart Grill	\$ 789
190-0052	Conversion Kit for ALXE-56BFG, NG to LP	\$ 93
190-0053	Conversion Kit for ALXE-56BFG, LP to NG	\$ 99
220-0300	LP Hose and Regulator*	\$ 154

*For use when converting from NG to LP, required for use with a standard 5 gallon propane tank.

** Premium color pricing must be added to the price of the product

ALFRESCO ACCESSORIES



15 WAYS TO COOK

Only the Alfresco Outdoor Kitchen offers this many ways to cook!



Grilling



Wok Cooking



Searing



Braising



Steaming



Boiling



Smoking



Roasting



Baking



Blanching



Teppanyaki



Cold Smoke Roasting



Frying



Griddling



Rotisserie
Cooking

Grilling is only the beginning of all the great ways that Alfresco can help you prepare an excellent meal in your new outdoor kitchen. Alfresco offers the industry's largest selection of restaurant inspired, grill-transforming, outdoor kitchen accessories! Build your dream outdoor kitchen using a wide variety of Alfresco's complementary products.



DROP-IN GRILL ACCESORIES



INDIRECT ROASTING POD

Turn your grill into an amazing roasting oven with this accessory. Holds drip pan for self-basting, bringing out true slow-roast flavor. Use adjacent burners to create convection heat, or smoke-and-roast using the smoke and herb infusion system.



STEAMER | FRYER | PASTA COOKER

Drops into any Alfresco grill to blanch, steam, fry or boil.



SOLID FUEL INSERT

Transform your Alfresco gas grill into a wood-source cooking system. Simply drop this specially designed insert into the grill and fill with your favorite wood, lump charcoal, or other solid fuel for real wood-cooking flavor.



COMMERCIAL GRIDDLE

$\frac{3}{16}$ " Solid stainless steel plate with side and back splash that can be used with any Alfresco grill. Great for Teppanyaki, fajitas, breakfast, or juicy burgers.

MODEL	DESCRIPTION	UMRP/MAP
AIC-POD	Indirect Roasting Pod	\$ 469
AG-SF	Grill Mounted Steamer/Fryer	\$ 745
SFI-POD	Solid Fuel Insert	\$ 865
AGSQ-G	Commercial Griddle	\$ 469



ALFRESCO 30" DEDICATED GRIDDLE AXE-30GT

Features

- 304 Stainless Steel, All-Welded Construction, and Polished Accents.
- 3/8" Solid Steel Cooking Surface.
- Dual-Zone Thermostatically Controlled Griddle Surface Creates Precise Even Heating Over Entire Cooking Area.
- Nickel-Plated Knobs and Bezels.
- Easy-to-Reach, Stainless Steel Push-Button Ignition.
- Exclusive Durasleeve™ Heat-Protected Wiring.



MODEL	DESCRIPTION	UMRP/MAP
AXE-30GT-LP	30" Built-In Griddle, 2 Zone, LP	\$ 4,645
AXE-30GT-NG	30" Built-In Griddle, 2 Zone, NG	\$ 4,645
AXE-30GTC-LP	30" Built-In Griddle, 2 Zone, LP Mounted on Cart	\$ 6,749
AXE-30GTC-NG	30" Built-In Griddle, 2 Zone, NG Mounted on Cart	\$ 6,749
XE-30GTC	30" Standard 2 Door Cart Only	\$ 2,105
See Chart Pg 11**	30" Dedicated Griddle, Standard Colors	\$ 430
See Chart Pg 11**	30" Dedicated Griddle, Custom Colors	\$ 864
See Chart Pg 11**	30" Dedicated Griddle on Cart, Standard Colors	\$ 1,080
See Chart Pg 11**	30" Dedicated Griddle on Cart, Custom Colors	\$ 2,160

** Premium color pricing must be added to the price of the product



VERSA POWER SYSTEM

Alfresco's Versa Power™ cooker offers 400 to 65,000 BTUs of power for total heat control. The unique, specially designed super heavy-duty spider grate can handle from the smallest of saucepans, and up to a 100 quart stock pot. With numerous options to expand it's versatility, it is the perfect complementary appliance to complete your outdoor kitchen.

- Power and Versatility at your Fingertips with Numerous Options
- Unique Individually Controlled Double Burner System
- Brass Center Burner Adjusts from 400 to 20,000 BTUs
- Stainless Steel Outer Tube Burner Adjusts from 5,000 to 45,000 BTUs
- 5/16" Diameter Stainless Steel Spider Grate with Removable Trivet
- Ideal For Use as a European French Top
- The Perfect Complementary Appliance to Complete Your Outdoor Kitchen



Simmer delicate sauces at a low 400 BTU



Center burner adjusts from 400 to 20,000 BTU



Outer burner adjusts from 5,000 to 45,000 BTU



Both burners yield an unprecedented 65,000 BTU



MODEL	DESCRIPTION	WIDTH	UMRP/MAP
AXEVP-LP	24" Versa Power Cooker, LP	24"	\$ 2,485
AXEVP-NG	24" Versa Power Cooker, NG	24"	\$ 2,485
AGV-VERSA	Vinyl Cover for 24" Versa Power Cooker		\$ 105
See Chart Pg 11**	24" Versa Power, Standard Colors		\$ 430
See Chart Pg 11**	24" Versa Power, Custom Colors		\$ 864



MODEL	DESCRIPTION	WIDTH	UMRP/MAP
AXEVP-C	24" Cart For Versa Power Cooker	24"	\$ 1,199



MODEL	DESCRIPTION	WIDTH	UMRP/MAP
AXEVP-TG	19" Teppanyaki Griddle	19"	\$ 1005



MODEL	DESCRIPTION	WIDTH	UMRP/MAP
AXEVP-WOK	22" Commercial Wok	22"	\$ 235



MODEL	DESCRIPTION	UMRP/MAP
POT FAUCET	Double Joint Spout Pot Filler Faucet	\$ 485



MODEL	DESCRIPTION	UMRP/MAP
AXEVP-T10	Adjustable Pot Filler Tower	\$ 1,265



MODEL	DESCRIPTION	UMRP/MAP
AXEVP-COUNTER	AGPVC - All Stainless Counter with Storage	\$ 4,435
AXEVP-LP TANK	14" LP Tank Attachment For AGVPC Counter	\$ 645



MODEL	DESCRIPTION	WIDTH	UMRP/MAP
AXE-30DR-SC	30" Versa Power Accessory Drawer	30"	\$ 1,399
See Chart Pg 11**	30" Versa Power Drawer, Standard Colors		\$ 430

MODEL	DESCRIPTION	UMRP/MAP
190-0056	Conversion Kit for Versa PowerNG to LP	\$ 51

** Premium color pricing must be added to the price of the product

SIDE BURNERS & ACCESSORIES



MODEL	DESCRIPTION	WIDTH	UMRP/MAP
AXESB-2C-LP	Dual Side Burner for Cart, LP	14"	\$ 1,865
AXESB-2C-NG	Dual Side Burner for Cart, NG	14"	\$ 1,865
AXESB-2-LP	Built-In, Dual Side Burner, LP	14"	\$ 1,615
AXESB-2-NG	Built-In, Dual Side Burner, NG	14"	\$ 1,615
AGV-SB2	Vinyl Cover for Dual Side Burner		\$ 105
See Chart Pg 11**	Dual Side Burner, Standard Colors		\$ 214
See Chart Pg 11**	Dual Side Burner, Custom Colors		\$ 434



MODEL	DESCRIPTION	WIDTH	UMRP/MAP
AXESZ-LP	Built-In, SearZone Side Burner, LP	14"	\$ 2,019
AXESZ-NG	Built-In, SearZone Side Burner, NG	14"	\$ 2,019
See Chart Pg 11**	Sear Zone Side Burner, Standard Colors		\$ 216
See Chart Pg 11**	Sear Zone Side Burner, Custom Colors		\$ 430



MODEL	DESCRIPTION	WIDTH	UMRP/MAP
AG-WOK	14" Commercial Wok	14"	\$ 209
AG-WR	Wok Ring Adapter	14"	\$ 185

*AG-WOK and AG-WR is not designed for use with Sear Zone Side Burner (AXESZ)



MODEL	DESCRIPTION	UMRP/MAP
AGSB-G	Griddle for Side Burner	\$ 525

*AGSB-G is not designed for use with Sear Zone Side Burner (AXESZ)

MODEL	DESCRIPTION	UMRP/MAP
190-0013	Conversion Kit for Side Burners - NG to LP and LP to NG (All-in-One-Kit)	\$ 64

MODEL	DESCRIPTION	UMRP/MAP
190-0056	Conversion Kit for Versa Power - NG to LP and LP to NG (All-in-One-Kit)	\$ 51

** Premium color pricing must be added to the price of the product



VERSA SINK SYSTEM AND ACCESSORIES

Versa sinks are one of the most versatile pieces for your outdoor kitchen. This modular system transforms from a sink to an ice bin to a beverage center to a wash-up center in a matter of seconds using components found in the following pages.

- 3" Basket Drain with Stopper
- Full Ice Capacity of 90 Pounds
- 1" Foam Insulation on All Sides and Bottom
- Wood Cutting Board
- Hang-On Front Bottle Speed Rail (4 Bottle Capacity)



MODEL	DESCRIPTION	WIDTH	UMRP/MAP
AGBC-14 ¹	Versa 14" Sink & Beverage Center	14"	\$ 1,339
AGBC-24 ²	Versa 24" Sink & Beverage Center	24"	\$ 1,849

(1) Includes: 10" wide speed rail and sliding ice cover

(2) Includes: 14" wide speed rail, bottle opener, 4- bottle well with holder tray and sliding ice cover



MODEL	DESCRIPTION	WIDTH	UMRP/MAP
AGBC-30	Versa 30" Sink	30"	\$ 1,685

MODEL	DESCRIPTION	WIDTH	UMRP/MAP
BAR PACKAGE ¹	Bartending Package for 30" Sink	30"	\$ 1,119
SINK PACKAGE ²	Preparation Package for 30" Sink	30"	\$ 745

(1) Includes: 6" deep Ice Pan, Cutting Board, Speed Rail, 4 Bottle Wells, Blender Shelf, Bottle Opener with Cap Catcher and Towel Holder

(2) Includes: 4" Porforated Colander, Wood Cutting Board, Speed Rail and Towel Holder

VERSA SINK SYSTEM ACCESSORIES

MODEL	DESCRIPTION	WIDTH	UMRP/MAP
BO	Bottle Opener, Cap Catcher & Towel Rack		\$ 185
SPR-LG	19" Speed Rail	19"	\$ 525
SPR-SM	14" Speed Rail	14"	\$ 395
TH	Paper Towel Holder		\$ 135
CT	Condiment Tray		\$ 169
DS	Display Shelf		\$ 135
HS-30	Serving Shelf		\$ 745
ICE PAN	6" Deep Ice Pan		\$ 135
MS	Middle Shelf (HS-30 or PR-30 Required)		\$ 135
PANTRY FAUCET	Commercial Dual Supply Pantry Faucet		\$ 665
PR-30	High Shelf w/ Pot Rack & Light		\$ 889
SC-30	Versa Sink S/S Cover		\$ 355
AVDT-30	Vinyl Cover for 30" Beverage Center		\$ 179
BS	Blender Shelf		\$ 209
BWELL	4 Bottle Well with Holder Tray		\$ 145
COLANDER	4" Deep Colander		\$ 135



MODEL	DESCRIPTION	WIDTH	UMRP/MAP
ASK-T	14" Prep & Hand Wash Sink	14"	\$ 1,549



MODEL	DESCRIPTION	WIDTH	UMRP/MAP
RAIL-14	14" Speed Rail for Island Installation	14"	\$ 199
RAIL-19	19" Speed Rail for Island Installation	19"	\$ 219

GARNISH RAIL & PLATING STATION



MODEL	DESCRIPTION	WIDTH	UMRP/MAP
APS-30P	30" Plating & Garnish Center with Food Pans	30"	\$ 2,015

TRASH CENTERS & ACCESSORIES



MODEL	DESCRIPTION	WIDTH	UMRP/MAP
AXE-TC-SC	15" Trash Center Drawer	15"	\$ 1,039
AXE-TC2D-SC	18" Dual Trash Center Drawer, Deep	18"	\$ 1,249
See Chart Pg 11**	15" Trash Center, Standard Colors		\$ 436
See Chart Pg 11**	15" Trash Center, Custom Colors		\$ 866
See Chart Pg 11**	18" Dual Trash Center, Standard Colors		\$ 436
See Chart Pg 11**	18" Dual Trash Center, Custom Colors		\$ 866



MODEL	DESCRIPTION	WIDTH	UMRP/MAP
APWC	10" Prep & Waste Chute	10"	\$ 429



MODEL	DESCRIPTION	WIDTH	UMRP/MAP
AXE-TH	17" Towel Holder	17"	\$ 429
See Chart Pg 11**	17" Towel Holder, Standard Colors		\$ 220
See Chart Pg 11**	17" Towel Holder, Custom Colors		\$ 436

ALFRESCO 18" ISLAND LP TANK DRAWER



MODEL	DESCRIPTION	WIDTH	UMRP/MAP
AXE-18LPTDR-SC	18" Island LP Tank Drawer	17"	\$ 649
See Chart Pg 11**	18" Island LP Tank Drawer, Standard Colors		\$ 430
See Chart Pg 11**	18" Island LP Tank Drawer, Custom Colors		\$ 860

** Premium color pricing must be added to the price of the product

DOORS AND DRAWERS



MODEL	DESCRIPTION	WIDTH	UMRP/MAP
AXE-17L-01	17" Single Access Door, Hinge Left	17"	\$ 379
AXE-17R-01	17" Single Access Door, Hinge Right	17"	\$ 379
See Chart Pg 11**	Single Access Door, Standard Colors		\$ 216
See Chart Pg 11**	Single Access Door, Custom Colors		\$ 430



MODEL	DESCRIPTION	WIDTH	UMRP/MAP
AXE-23L-01	23" Single Access Door, Hinge Left	23"	\$ 525
AXE-23R-01	23" Single Access Door, Hinge Right	23"	\$ 525
See Chart Pg 11**	Single Access Door, Standard Colors		\$ 214
See Chart Pg 11**	Single Access Door, Custom Colors		\$ 430



MODEL	DESCRIPTION	WIDTH	UMRP/MAP
AXE-30-01	30" Double Access Doors	30"	\$ 645
AXE-36-01	36" Double Access Doors	36"	\$ 735
AXE-42-01	42" Double Access Doors	42"	\$ 755
See Chart Pg 11**	Double Access Doors, Standard Colors		\$ 430
See Chart Pg 11**	Double Access Doors, Custom Colors		\$ 864



MODEL	DESCRIPTION	WIDTH	UMRP/MAP
AXE-17E	17" Island Access Door Enclosures Only	17"	\$ 545
AXE-23E	23" Island Access Door Enclosures Only	23"	\$ 745
AXE-30E	30" Island Access Door Enclosures Only	30"	\$ 915
AXE-36E	36" Island Access Door Enclosures Only	36"	\$ 1,039
AXE-42E	42" Island Access Door Enclosures Only	42"	\$ 1,119



MODEL	DESCRIPTION	WIDTH	UMRP/MAP
XEDS-1*	Accessory Door Bin for AXE-17, AXE-30 and DDC	17" & 30"	\$ 85
XEDS-2*	Accessory Door Bin for AXE-23 and AXE-42	23" & 42"	\$ 85
XEDS-3*	Accessory Door Bin for AXE-36	36"	\$ 85
XEDS-5	Accessory Door Bin for AXE-DDC-L/R-42SC	42"	\$ 85



MODEL	DESCRIPTION	WIDTH	UMRP/MAP
AXE-DDR-L-SC	17" Door, Drawer Combo, Hinge Left	17"	\$ 1,039
AXE-DDR-R-SC	17" Door, Drawer Combo, Hinge Right	17"	\$ 1,039
See Chart Pg 11**	Door, Drawer Combo, Standard Colors		\$ 436
See Chart Pg 11**	Door, Drawer Combo, Custom Colors		\$ 866

** Premium color pricing must be added to the price of the product



MODEL	DESCRIPTION	WIDTH	UMRP/MAP
AXE-DDC-L-42SC	42" Single Door, Triple Drawers, LH	42"	\$ 1,945
AXE-DDC-R-42SC	42" Single Door, Triple Drawers, RH	42"	\$ 1,945
AXE-DDC-L-SC	32" Single Door, Triple Drawers, Hinge Left	32"	\$ 1,685
AXE-DDC-R-SC	32" Single Door, Triple Drawers, Hinge Right	32"	\$ 1,685
See Chart Pg 11**	Single Door, Triple Drawers, Standard Colors		\$ 540
See Chart Pg 11**	Single Door, Triple Drawers, Custom Colors		\$ 1,080

30", 36" and 42" double sided access doors require two accessory bins each.



MODEL	DESCRIPTION	WIDTH	UMRP/MAP
AXE-DTH-L-SC	17" Door, Towel Holder Combo, Hinge Left	17"	\$ 865
AXE-DTH-R-SC	17" Door, Towel Holder Combo, Hinge Right	17"	\$ 865
See Chart Pg 11**	17" Door, Towel Holder, Standard Colors		\$ 430
See Chart Pg 11**	17" Door, Towel Holder, Custom Colors		\$ 860



MODEL	DESCRIPTION	WIDTH	UMRP/MAP
XEDS-1	Accessory Door Bin for DDC-SC	32"	\$ 85
XEDS-4	Accessory Door Bin for DDR-SC and DTH-SC	17"	\$ 85



MODEL	DESCRIPTION	WIDTH	UMRP/MAP
AXE-2DR-SC	17" Two-Tier Storage Drawers	17"	\$ 1,149
See Chart Pg 11**	17" Two-Tier Storage Drawers, Standard Colors		\$ 430
See Chart Pg 11**	17" Two-Tier Storage Drawers, Custom Colors		\$ 866



MODEL	DESCRIPTION	WIDTH	UMRP/MAP
AXE-3DR-SC	17" Three-Tier Storage Drawers	17"	\$ 1,435
See Chart Pg 11**	17" Three-Tier Storage Drawers, Standard Colors		\$ 434
See Chart Pg 11**	17" Three-Tier Storage Drawers, Custom Colors		\$ 864



MODEL	DESCRIPTION	WIDTH	UMRP/MAP
AXE-3DRTH-SC	17" Triple Drawer, Towel Holder Combo	17"	\$ 1,789
See Chart Pg 11**	17" Triple Drawer, Towel Holder, Standard Colors		\$ 430
See Chart Pg 11**	17" Triple Drawer, Towel Holder, Custom Colors		\$ 860



MODEL	DESCRIPTION	WIDTH	UMRP/MAP
AXE-30DR-SC	30" Versa Power Accessory Drawer	30"	\$ 1,399
See Chart Pg 11**	30" Versa Power Accessory Drawer, Standard Colors		\$ 430
See Chart Pg 11**	30" Versa Power Accessory Drawer, Custom Colors		\$ 866

** Premium color pricing must be added to the price of the product

DRY STORAGE PANTRIES



MODEL	DESCRIPTION	WIDTH	UMRP/MAP
AXEDSP-30H	30" High Profile Dry Storage Pantry, 33" H	30"	\$ 2,755
AXEDSP-30L	30" Low Profile Dry Storage Pantry, 21" H	30"	\$ 2,385
See Chart Pg 11**	30" High Profile Dry Storage Pantry, Standard Colors		\$ 540
See Chart Pg 11**	30" High Profile Dry Storage Pantry, Custom Colors		\$ 1,080
See Chart Pg 11**	30" Low Profile Dry Storage Pantry, Standard Colors		\$ 434
See Chart Pg 11**	30" Low Profile Dry Storage Pantry, Custom Colors		\$ 864



MODEL	DESCRIPTION	WIDTH	UMRP/MAP
AXEDSP-36L	36" Low Profile Dry Storage Pantry, 21" H	21"	\$ 2,645
See Chart Pg 11**	36" Low Profile Dry Storage Pantry, Standard Colors		\$ 430
See Chart Pg 11**	36" Low Profile Dry Storage Pantry, Custom Colors		\$ 864



MODEL	DESCRIPTION	WIDTH	UMRP/MAP
AXEDSP-42H	42" High Profile Dry Storage Pantry, 33" H	42"	\$ 3,269
AXEDSP-42L	42" Low Profile Dry Storage Pantry, 21" H	42"	\$ 2,835
See Chart Pg 11**	42" Dry Storage Pantry, Standard Colors		\$ 540
See Chart Pg 11**	42" Dry Storage Pantry, Custom Colors		\$ 1,080

** Premium color pricing must be added to the price of the product

FOOD WARMERS



MODEL	DESCRIPTION	WIDTH	UMRP/MAP
AXEFW	14" Built-In Food Warmer	14"	\$ 1,389
AXEFWC	14" Cart Mount Food Warmer	24"	\$ 1,635



MODEL	DESCRIPTION	WIDTH	UMRP/MAP
AXEWD-30	30" Electric Warming Drawer	30"	\$ 2,429
See Chart Pg 11**	30" Electric Warming Drawer, Standard Colors		\$ 430
See Chart Pg 11**	30" Electric Warming Drawer, Custom Colors		\$ 866

WIND GUARDS



Wind Guard for
Built In Models



Wind Guard for
Cart Models

MODEL	DESCRIPTION	WIDTH	UMRP/MAP
AWS-30	Wind Guard for 30" Grill	30"	\$ 455
AWS-30C	Wind Guard for 30" Cart Grill	30"	\$ 545
AWS-36	Wind Guard for 36" Grill	36"	\$ 515
AWS-36C	Wind Guard for 36" Cart Grill	36"	\$ 569
AWS-42	Wind Guard for 42" Grill	42"	\$ 569
AWS-42C	Wind Guard for 42" Cart Grill	42"	\$ 685
AWS-56	Wind Guard for 56" Grill	56"	\$ 659
AWS-56C	Wind Guard for 56" Cart Grill	56"	\$ 789

** Premium color pricing must be added to the price of the product



REFRIGERATION COOLING SYSTEM & ACCESSORIES

UNDER GRILL REFRIGERATOR FEATURES (ARXE MODELS)

- All Stainless Steel Construction Inside and Out
- 1,000 BTU All-Weather Refrigeration System for Deep-Cooling
- Certified to NSF Standards
- Temperatures Uniquely Adjustable from 27° to 56°F
- Commercial Fan-Driven Fin Evaporator Cooling System
- Fully Front Ventilated
- Commercial Polyurethane Foam Insulation
- Flash Recovery System Quickly Cools Internal Temperature
- User-Friendly Digital Control with Lighted Display
- Door-Activated Internal Lighting

UNDER COUNTER REFRIGERATOR FEATURES (URS-1XE MODEL)

- Two Removable / Adjustable Stainless Steel Shelves
- Field-Reversible Door
- Converts to Keegerator in Seconds
- Digital Control with Lighted Display
- Commercial Fan-Driven Fin Evaporator Cooling System
- 7.25 Cubic Feet

REFRIGERATION & COOLING



MODEL	DESCRIPTION	WIDTH	UMRP/MAP
ARXE-42	42" 7.25 Cubic Ft. Under-Grill Refrigerator	42"	\$ 8,219
ARXE-42C	42" 7.25 Cubic Ft. Under Grill Refrigerator Cart Model	42"	\$ 8,735
ARXE-56C	56" 7.25 Cubic Ft. Under Grill Refrigerator Cart Model	56"	\$ 9,129
See Chart Pg 11**	ARXE Under-Grill Refrigerator, Standard Colors		\$ 1,080
See Chart Pg 11**	ARXE Under-Grill Refrigerator, Custom Colors		\$ 2,160



MODEL	DESCRIPTION	WIDTH	UMRP/MAP
URS-1XE	28" Single Door Refrigerator	28"	\$ 5,159
ACK	Caster Kit for URS-1XDE only		\$ 495
See Chart Pg 11**	URS Refrigerator, Standard Colors		\$ 540



MODEL	DESCRIPTION	WIDTH	UMRP/MAP
AKK	Keerator Kit for URS-1XE only		\$ 1,149



MODEL	DESCRIPTION	WIDTH	UMRP/MAP
AXE-ID	26" Under Counter Ice Drawer & Bev Center Insulated	26"	\$ 2,529
See Chart Pg 11**	Under Counter Ice Drawer, Standard Colors		\$ 400
See Chart Pg 11**	Under Counter Ice Drawer, Custom Colors		\$ 800

** Premium color pricing must be added to the price of the product



ALFRESCO PIZZA OVENS

Setting the standard for creative innovations in outdoor cooking equipment is what Alfresco has become known for. The Pizza Oven is an exciting new outdoor pizza and culinary oven engineered to commercial performance caliber. With a preheat time of only 15 minutes, the Pizza Oven is not only great for cooking pizza, but also is fabulous for baking, broiling, roasting and just about anything else you do in a regular oven.

However, it's faster and with much better results! Whether you're cooking 3-minute Neapolitan pizzas directly on the hearth, thick prime New York steaks pan seared in an iron skillet, herb and spice rubbed pork chops in a ceramic baking dish, skillet-sizzling shellfish, or zesty jalapeno corn bread in a ramekin, it can all be done in Alfresco's Pizza Oven.

- High-Tech 20,000 BTU High Heat Ceramic Infrared Hearth Burner
- 20,000 BTU Tube-Log Burner
- Alfresco Exclusive Air-Cooling Plenum keeps Control Panel Cool to the Touch
- 3/4" Thick High Quality Ceramic Slab Bottom and Ceiling for Even Intense Radiating Heat
- Complete 304 Heli-Arc Welded Stainless Steel Construction
- 456 Square Inches of Cooking Area
- Halogen Oven Light
- Removable Hinges and Doors
- Double Walled Removable Top
- 8 1/2" High Opening
- Counter Top Rear Exhaust

PIZZA OVEN & ACCESSORIES



MODEL	DESCRIPTION	WIDTH	UMRP/MAP
AXE-PZA-BI-LP	30" Built-In Pizza Oven, LP	30"	\$ 8,099
AXE-PZA-BI-NG	30" Built-In Pizza Oven, NG	30"	\$ 8,099
See Chart Pg 11**	30" Built-In Pizza Oven, Standard Colors		\$ 430
See Chart Pg 11**	30" Built-In Pizza Oven, Custom Colors		\$ 866



MODEL	DESCRIPTION	WIDTH	UMRP/MAP
AXE-PZA-LP	30" Countertop Pizza Oven, LP	30"	\$ 7,559
AXE-PZA-NG	30" Countertop Pizza Oven, NG	30"	\$ 7,559
See Chart Pg 11**	30" Countertop Pizza Oven, Standard Colors		\$ 430
See Chart Pg 11**	30" Countertop Pizza Oven, Custom Colors		\$ 866



MODEL	DESCRIPTION	WIDTH	UMRP/MAP
AXE-PZA-CART-01	30" Pizza Oven Cart	30"	\$ 1,635



MODEL	DESCRIPTION	WIDTH	UMRP/MAP
AXE-PZA-PPC	30" Deluxe Pizza Oven Prep Cart	30"	\$ 5,959



MODEL	DESCRIPTION	WIDTH	UMRP/MAP
APS-30PPC	30" Pizza Prep & Garnish Rail	30"	\$ 2,349

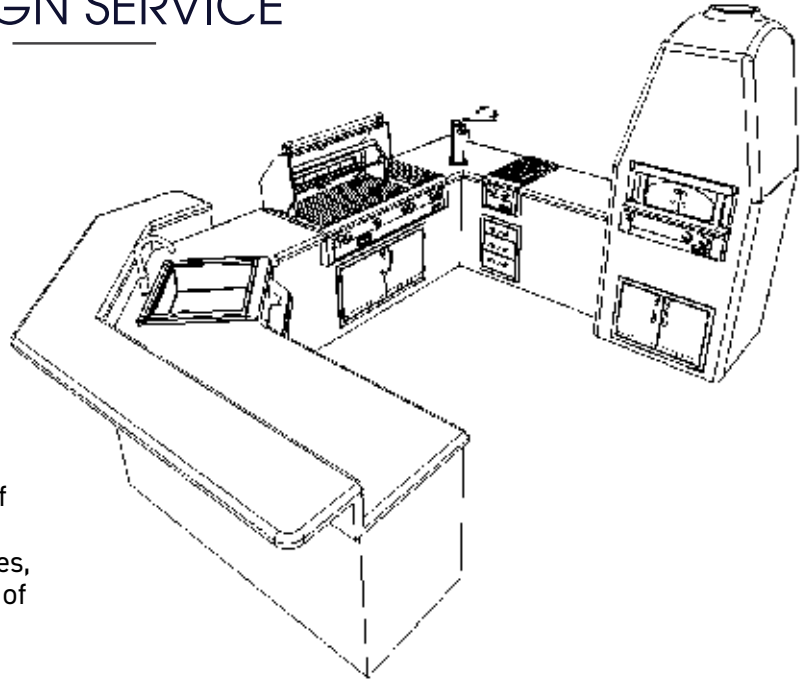
MODEL	DESCRIPTION	UMRP/MAP
AXE-PZA-PEEL	Pizza Peel	\$ 89
AXE-PZA-GDKIT*	Aftermarket Glass Door Conversion Kit for Older Models	\$ 525
AGV-PZA	Vinyl Cover for Countertop Pizza Oven - Replacement	\$ 179
190-0070	Conversion Kit for Pizza Oven, NG to LP	\$ 108
190-0071	Conversion Kit for Pizza Oven, LP to NG	\$ 99

*All pizza ovens with a serial number starting with a 18-have a factory installed glass door and other enhancements.

** Premium color pricing must be added to the price of the product

DESIGN SERVICE

MAKE YOUR DREAM KITCHEN A REALITY!



Alfresco was started by a well-seasoned team of experts who, in addition to manufacturing high-quality commercial kitchen equipment for decades, also specialized in the design and pace-planning of commercial kitchens.

“An efficient and well space-planned commercial kitchen can be the key to the success of an operation.” The faster the food gets out of the kitchen, the quicker the tables can turn. Alfresco is happy to now offer this expertise to its customers by assisting in the design of your dream open-air culinary space. Our zone-design strategy is used in Alfresco designed kitchens.

This complimentary service is offered exclusively to Alfresco authorized dealers and their customers.

- 1 Submit a design to Maple Distributing at alfrescodesign@mapledistributing.com Using the form on p.47
- 2 Once the Alfresco Design is complete, it will be emailed back to the dealer.
- 3 Submit the project to your client for final approval.

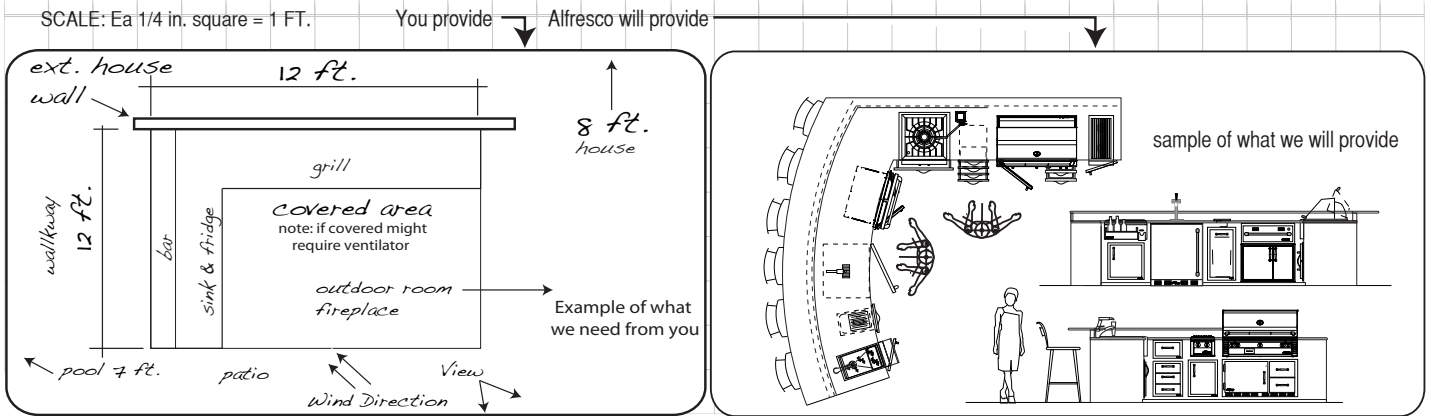
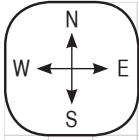


REQUIRED DESIGN SERVICE INFORMATION

- Sketch or architects drawing with “overall dimensions showing shape of kitchen” and where you would like the grill.
- Outdoor room (if one) relative to kitchen
- Photos of space (if possible)

OPTIONAL DETAILING

- Request of recommendations for other convenient Alfresco accessories to optimize the outdoor culinary experience.
- Seating recommendations included in design
- Sink Considerations (this would require water, drainage, and even direct drain to sewer if disposer is desired)
- Refrigeration / Ice Maker



I would like the following items in my kitchen:

ALX2- grill

gas type: Natural Liquid Propane

Customer Name _____

Phone No. _____ Date _____

Please return by email to sales associate below:

Dealer _____ Ph: No.: _____

Sales Associate _____ Email: _____

Before Artisan, your choice for an outdoor kitchen came down to premium American-made brands at a high cost, or much less expensive (and much lower quality) imports. At Artisan, they strive to offer affordable luxury with all the quality and features you expect in premium American-made appliances and accessories, at prices normally only imports can offer.

Our years of experience building equipment for some of the finest restaurants, and our state-of-the-art manufacturing facility, allow us to offer an unprecedented mix of quality and value.

*Artisan*TM

Professional Grills by **Alfresco**TM

SETTING THE STANDARD FOR AFFORDABLE
LUXURY MADE IN AMERICA



ARTISAN GRILL FEATURES AND BENEFITS



Integrated Thermometer

Standard on every Artisan grill, this convenient thermometer is built into the hood for accurate oven roasting temperatures.



Exclusive Control Panel Air Cooling Curtain



A special air-cooling plenum blasts a curtain of cool air that naturally flows up between the front control panel and firebox keeping front panel and bullnose safely cool to touch. This also protects all the electronics.



Fully-adjustable Brass Valves Allow for Precision Flame Control

Completely redesigned grill knobs with precision touch in mind.

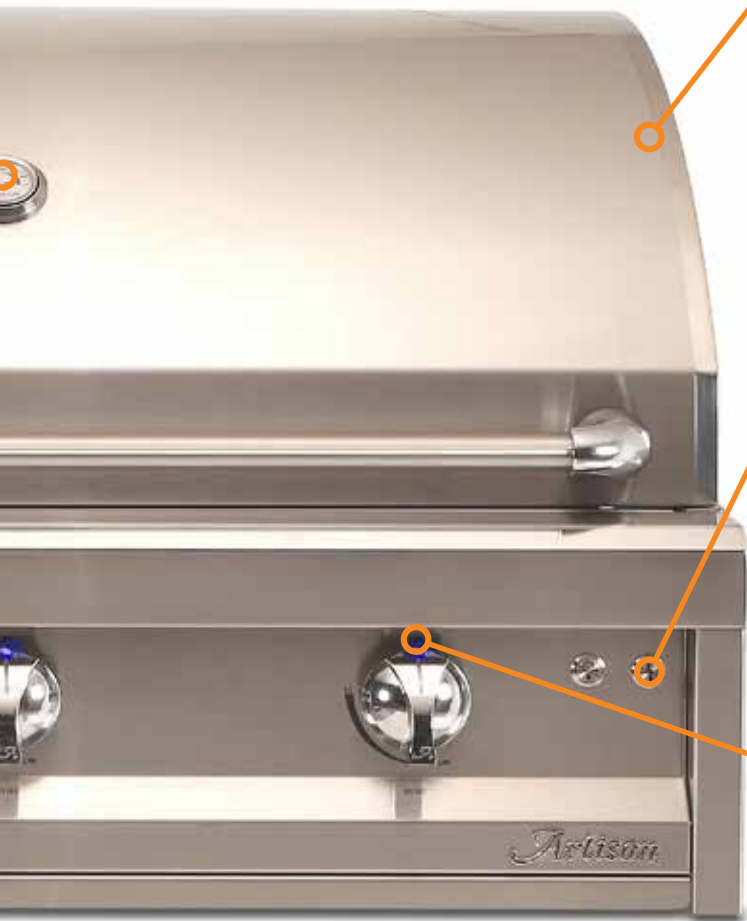


Full One Year Warranty

The Artisan Grill Warranty covers all parts and labor for 1 year from date of purchase.



EXTERIOR



Hood Lift Assist

Heavy-duty stainless steel spring assist makes for one finger open and close of the grill hood.



Stainless Steel Controls

Stainless steel push-buttons for ignition and lighting are ergonomically integrated into the front control panel. (Professional series only)



Control Panel Lighting

Ambient Blue LED front panel lighting illuminates knobs creating a rich beam of light exactly where you need. (Professional series only)



Made In The U.S.A.

Made from all commercial-grade 304, 18-8 stainless steel, all helic-arc hand-welded seams with no mechanical fasteners.



ARTISAN GRILL FEATURES AND BENEFITS



Halogen Work Lights

Integrated high-intensity halogen work lights on 32", 36" and 42" models. Light lens is easily removable without the use of tools for easily changing bulbs, and cleaning. (Professional Series Only)



Adjustable Food Warming and Grilling Rack

Two position adjustable warming rack stores up and out of the way when rotissing. Ideal for above-grilling-surface holding and cooking. makes for one finger open and close of the grill hood.



Sear Zone Infrared Burner

Optional interchangeable infrared burner. 20,000 BTU infrared burner 100% combusting ceramic surface for intense even heat and authentic stakehouse results. Cooks 50% faster with virtually no flare-ups.

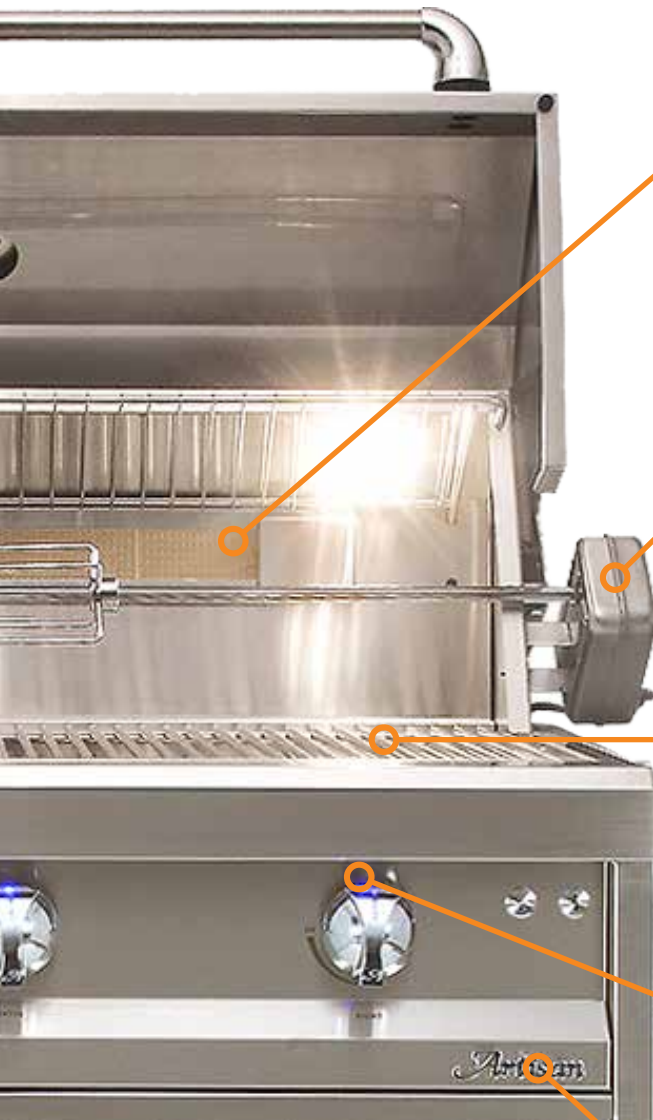


Exclusive Heat Delivery System

Heavy-duty 304 Stainless Steel U-Shaped burners create evenly distributed high heat with 20,000 BTUs to the cooking surface



INTERIOR



Flush Rear Infrared Rotisserie Burner



32", 36" and 42" model grills come with a flush-mounted 1500° rear ceramic infrared rotisserie burner. (Professional Series Only)



Heavy-Duty 50-lb. Torque Rotisserie Motor

Turns foods smoothly and consistently, producing delicious rotissed foods (Professional Series Only, optional on American Eagle series)



Stainless Steel Cooking Grates

Heavy-duty stainless steel cooking grates with a special non-stick electro-polished finish positioned over briquette and "U" burner sections.



Refractive Ceramic 5-Way Heat Distributing Briquettes



A special pyramid shape with a flat top and heat-holding cavity on underside delivers intense even heat to the cooking surface. Radiant tray locks briquettes in place. Turn tray over and fire burners on high with lid closed to self-clean.



Exclusive Heat Protected Wiring



Electrical wires are each encapsulated their full length with a 600° heat-resistance silicone sleeve, and electric connectors are protected with a silicone boot of same heat resistance silicone.

ARTISAN GRILLS



ARTISAN 32" PROFESSIONAL GRILL ARTP-32 | ARTP-32C

Features

- Three 20,000 BTU Main U Burners
- 15,000 BTU Infrared Rear Rotisserie Burner
- Total 75,000 BTUs
- Ceramic Briquettes
- 110V Electronic Ignition
- Bright Halogen Work Lights
- 2-Position Warming Rack
- Available in Built-In and Freestanding Models
- Optional Sear Burner



MODEL	DESCRIPTION	MAP	MSRP
ARTP-32-LP	Artisan 32" Built-In Grill, 3 Burner, Rotis, LP	\$ 3,109	\$ 3,439
ARTP-32-NG	Artisan 32" Built-In Grill, 3 Burner, Rotis, NG	\$ 3,109	\$ 3,439
ARTP-32C-LP	Artisan 32" Cart Grill, 3 Burner, Rotis, LP	\$ 3,979	\$ 4,419
ARTP-32C-NG	Artisan 32" Cart Grill, 3 Burner, Rotis, NG	\$ 3,979	\$ 4,419

OPTIONS AND ACCESSORIES

MODEL	DESCRIPTION	MAP	MSRP
ART-ISB	Infrared Single Sear Burner Insert	\$ 429	\$ 469
ART-IJ32	Insulated Jacket for 32" Grill	\$ 625	\$ 705
ART-32CV	Vinyl Cover for 32" Built-In Grill	\$ 105	\$ 119
ART-32CVC	Vinyl Cover for 32" Cart Grill	\$ 105	\$ 119
ARTP-G	Drop In Griddle	\$ 415	\$ 449
190-0078	Conversion Kit for ARTP-32, NG to LP	\$ 110	\$ 110
190-0083	Conversion Kit for ARTP-32, LP to NG	\$ 99	\$ 99

ARTISAN 36" PROFESSIONAL GRILL ARTP-36 | ARTP-36C



Features

- Three 20,000 BTU Main U Burners
- 15,000 BTU Infrared Rear Rotisserie Burner
- Total 75,000 BTUs
- 110V Electronic Ignition
- Ceramic Briquettes
- Bright Halogen Work Lights
- 2-Position Warming Rack
- Available in Built-In and Freestanding Models
- Optional Sear Burner



MODEL	DESCRIPTION	MAP	MSRP
ARTP-36-LP	Artisan 36" Built-In Grill, 3 Burner, Rotis, LP	\$ 3,735	\$ 4,155
ARTP-36-NG	Artisan 36" Built-In Grill, 3 Burner, Rotis, NG	\$ 3,735	\$ 4,155
ARTP-36C-LP	Artisan 36" Cart Grill, 3 Burner, Rotis, LP	\$ 4,839	\$ 5,375
ARTP-36C-NG	Artisan 36" Cart Grill, 3 Burner, Rotis, NG	\$ 4,839	\$ 5,375

OPTIONS AND ACCESSORIES

MODEL	DESCRIPTION	MAP	MSRP
ART-ISB	Infrared Single Sear Burner Insert	\$ 429	\$ 469
ART-IJ36	Insulated Jacket - 36" Grill	\$ 659	\$ 725
ART-36CV	Vinyl Cover for 36" Built-In Grill	\$ 105	\$ 119
ART-36CVC	Vinyl Cover for 36" Cart Grill	\$ 105	\$ 119
ARTP-G	Drop In Griddle	\$ 415	\$ 449
190-0079	Conversion Kit for ARTP-36/42-NG to LP	\$ 121	\$ 121
190-0084	Conversion Kit for ARTP-36/42-LP to NG	\$ 106	\$ 106

ARTISAN 42" PROFESSIONAL GRILL ARTP-42 | ARTP-42C



Features

- Three 20,000 BTU Main U Burners
- 15,000 BTU Infrared Rear Rotisserie Burner
- Total 75,000 BTUs
- 110V Electronic Ignition
- Ceramic Briquettes
- Bright Halogen Work Lights
- 2-Position Warming Rack
- Available in Built-In and Freestanding Models
- Optional Sear Burner



MODEL	DESCRIPTION	MAP	MSRP
ARTP-42-LP	Artisan 42" Built-In Grill, 3 Burner, Rotis, LP	\$ 4,139	\$ 4,599
ARTP-42-NG	Artisan 42" Built-In Grill, 3 Burner, Rotis, NG	\$ 4,139	\$ 4,599
ARTP-42C-LP	Artisan 42" Cart Grill, 3 Burner, Rotis, LP	\$ 5,249	\$ 5,825
ARTP-42C-NG	Artisan 42" Cart Grill, 3 Burner, Rotis, NG	\$ 5,249	\$ 5,825

OPTIONS AND ACCESSORIES

MODEL	DESCRIPTION	MAP	MSRP
ART-ISB	Infrared Single Sear Burner Insert	\$ 429	\$ 469
ART-IJ42	Insulated Jacket - 42" Grill	\$ 689	\$ 765
ART-42CV	Vinyl Cover for 42" Built-In Grill	\$ 105	\$ 119
ART-42CVC	Vinyl Cover for 42" Cart Grill	\$ 105	\$ 119
ARTP-G	Drop In Griddle	\$ 415	\$ 449
190-0079	Conversion Kit for ARTP-36/42-NG to LP	\$ 121	\$ 121
190-0084	Conversion Kit for ARTP-36/42-LP to NG	\$ 106	\$ 106

ARTISAN 26" AMERICAN EAGLE GRILL AAEP-26 | AAEP-26C

Features

- Two 20,000 BTU Main U Burners
- Total 40,000 BTUs
- 9V Electronic Ignition
- Ceramic Briquettes
- Warming Rack
- Optional: Rotis Accessory ART-ROT26 (Includes Motor, Spit, and Forks Only)
- Optional Sear burner Insert (ART-ISB)
- Available in Built-In and Freestanding Models



MODEL	DESCRIPTION	MAP	MSRP
AAEP-26-LP	American Eagle 26" Built-In Grill, 2 Burner, LP	\$ 2,105	\$ 2,339
AAEP-26-NG	American Eagle 26" Built-In Grill, 2 Burner, NG	\$ 2,105	\$ 2,339
AAEP-26C-LP	American Eagle 26" Cart Grill, 2 Burner, LP	\$ 3,055	\$ 3,389
AAEP-26C-NG	American Eagle 26" Cart Grill, 2 Burner, NG	\$ 3,055	\$ 3,389

OPTIONS AND ACCESSORIES

MODEL	DESCRIPTION	MAP	MSRP
ART-ISB	Infrared Single Sear Burner Insert	\$ 429	\$ 469
ART-IJ26	Insulated Jacket for 26" Grill	\$ 609	\$ 669
ART-26CV	Vinyl Cover for 26" Built-In Grill	\$ 105	\$ 119
ART-26CVC	Vinyl Cover for AAEP-26	\$ 105	\$ 119
ART-ROT26	Rotisserie Kit-AAEP26 Only AAE26	\$ 249	\$ 279
ARTP-G	Drop In Griddle	\$ 415	\$ 449
190-0075	Conversion Kit for AAEP-26-NG to LP	\$ 66	\$ 66
190-0080	Conversion Kit for AAEP-26-LP to NG	\$ 62	\$ 62

ARTISAN 32" AMERICAN EAGLE BUILT-IN GRILL AAEP-32 | AAEP-32C



Features

- Three 20,000 BTU Main U Burners
- Total 60,000 BTUs
- 9V Electronic Ignition
- Ceramic Briquettes
- Warming Rack
- Optional: Rotis Accessory ART-ROT32 (Includes Motor, Spit, and Forks Only)
- Optional Sear burner Insert (ART-ISB)
- Available in Built-In and Freestanding Models



MODEL	DESCRIPTION	MAP	MSRP
AAEP-32-LP	American Eagle 32" Built-In Grill, 3 Burner, LP	\$ 2,525	\$ 2,829
AAEP-32-NG	American Eagle 32" Built-In Grill, 3 Burner, NG	\$ 2,525	\$ 2,829
AAEP-32C-LP	American Eagle 32" Cart Grill, 3 Burner, LP	\$ 3,625	\$ 4,015
AAEP-32C-NG	American Eagle 32" Cart Grill, 3 Burner, NG	\$ 3,625	\$ 4,015

OPTIONS AND ACCESSORIES

MODEL	DESCRIPTION	MAP	MSRP
ART-ISB	Infrared Single Sear Burner Insert	\$ 429	\$ 469
ART-IJ32	Insulated Jacket	\$ 625	\$ 705
ART-32CV	Vinyl Cover for 32" Built-In Grill	\$ 105	\$ 119
ART-32CVC	Vinyl Cover for 32" Cart Grill	\$ 105	\$ 119
ART-ROT32	Rotisserie Kit-AAEP32 Only	\$ 285	\$ 309
ARTP-G	Drop In Griddle	\$ 415	\$ 449
190-0076	Conversion Kit for AAEP-32-NG to LP	\$ 73	\$ 73
190-0081	Conversion Kit for AAEP-32-LP to NG	\$ 62	\$ 62

ARTISAN 36" AMERICAN EAGLE GRILL AAEP-36 | AAEP-36C

Features

- Three 20,000 BTU Main U Burners
- Total 60,000 BTUs
- 9V Electronic Ignition
- Ceramic Briquettes
- Warming Rack
- Optional Sear burner Insert (ART-ISB)
- Available in Built-In only

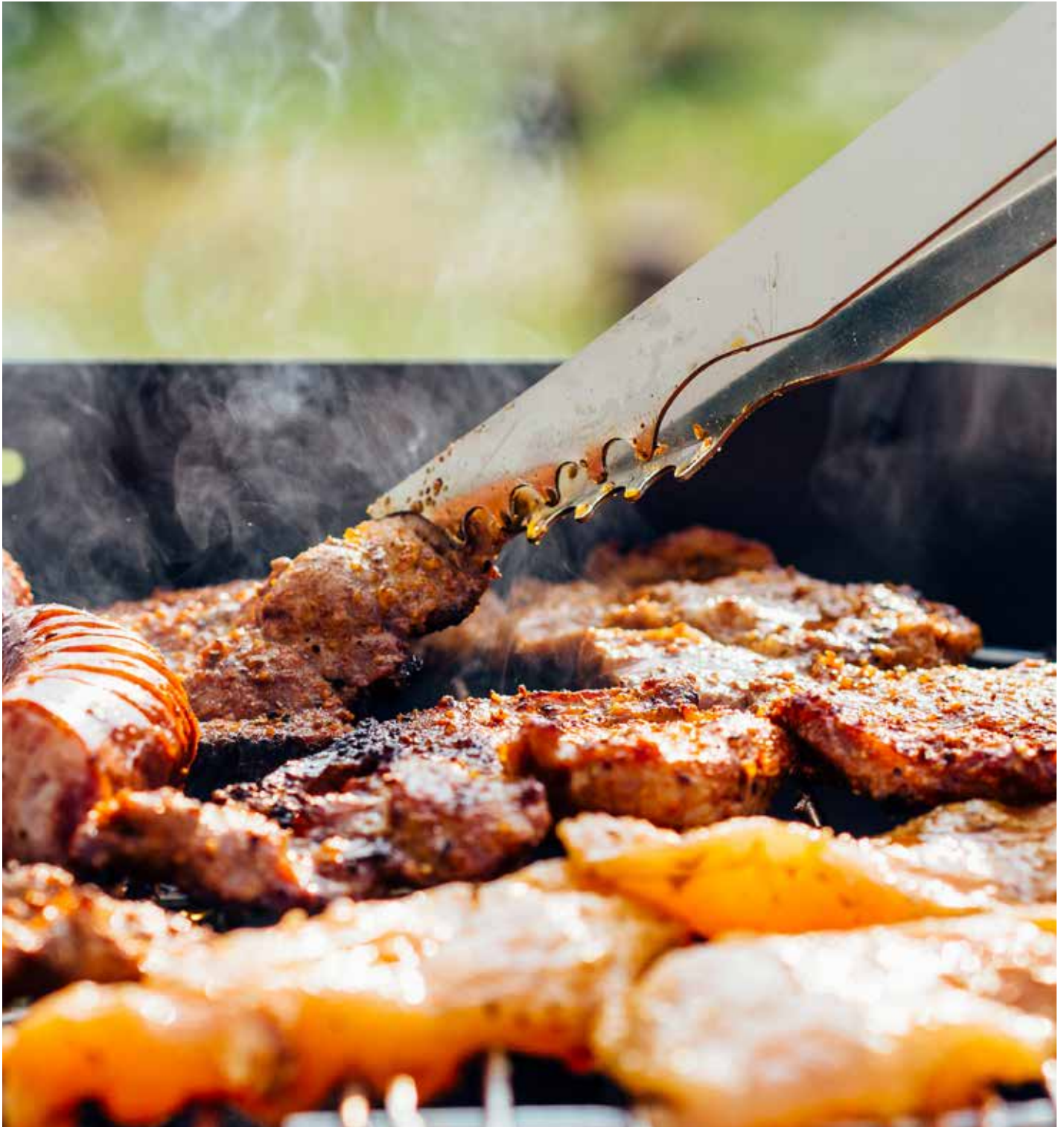


MODEL	DESCRIPTION	MAP	MSRP
AAEP-36-LP	American Eagle 36" Built-In Grill, 3 Burner, LP	\$ 2,959	\$ 3,289
AAEP-36-NG	American Eagle 36" Built-In Grill, 3 Burner, NG	\$ 2,959	\$ 3,289
AAEP-36C-LP	American Eagle 36" Cart Grill, 3 Burner, LP	\$ 4,055	\$ 4,489
AAEP-36C-NG	American Eagle 36" Cart Grill, 3 Burner, NG	\$ 4,055	\$ 4,489

OPTIONS AND ACCESSORIES

MODEL	DESCRIPTION	MAP	MSRP
ART-ISB	Infrared Single Sear Burner Insert	\$ 429	\$ 469
ART-IJ36	Insulated Jacket for 36" Grill	\$ 659	\$ 725
ART-36CV	Vinyl Cover for 36" Built-In Grill	\$ 105	\$ 119
ART-36CVC	Vinyl Cover for 36" Cart Grill	\$ 105	\$ 119
ART-ROT36	Rotisserie Kit AAEP-36	\$ 309	\$ 335
ARTP-G	Drop In Griddle	\$ 415	\$ 449
190-0077	Conversion Kit for AAEP-36-NG to LP	\$ 77	\$ 77
190-0082	Conversion Kit for AAEP-36-LP to NG	\$ 66	\$ 66

ARTISAN ACCESSORIES



Complete your dream outdoor kitchen with Artisan's grill accessory offering. These pieces are completely manufactured of premium 304 stainless steel to withstand years of outdoor kitchen use.

REFRIGERATOR



MODEL	DESCRIPTION	MAP	MSRP
ART-BC24	24" Outdoor Refrigerator, SS, RH Door Swing	\$ 1,789	\$ 1,909
ART-BC24-L	24" Outdoor Refrigerator, SS, LH Door Swing	\$ 1,789	\$ 1,909
ART-BC24-KIT*	Handle & Badge Kit for Outdoor Refrigerator	\$ 39	\$ 49

* Must order ART-BC24-KIT with refrigerator

SIDE BURNERS



MODEL	DESCRIPTION	WIDTH	MAP	MSRP
ART-SB1-NG	Single Side Burner, NG	12"	\$ 569	\$ 615
ART-SB1-LP	Single Side Burner, LP	12"	\$ 569	\$ 615
ARTC-SBM-01	Shelf Mount for Cart Model, ART-SB1 Only		\$ 169	\$ 185



MODEL	DESCRIPTION	MAP	MSRP
ARTP-18PB-NG	Power Burner, Built-In, NG	\$ 2,089	\$ 2,299
ARTP-18PB-LP	Power Burner, Built-In, LP	\$ 2,089	\$ 2,299
ARTP-18G	Griddle for 18" Power Burner	\$ 669	\$ 735
ART-18PBCV	Power Burner Cover	\$ 105	\$ 119



MODEL	DESCRIPTION	WIDTH	MAP	MSRP
ARTP-SB2-NG	Double Side Burner, NG	14"	\$ 1,075	\$ 1,175
ARTP-SB2-LP	Double Side Burner, LP	14"	\$ 1,075	\$ 1,175
ARTP-SB2CV	Double Side Burner Cover		\$ 105	\$ 119
ARTPC-SB2M	Shelf Mount for Cart, ARTP-SB2 Only		\$ 239	\$ 249
190-0043	Conversion Kit for Side Burner, NG to LP		\$ 55	\$ 55



MODEL	DESCRIPTION	MAP	MSRP
ART-ISB*	Infrared Single Sear Burner Insert, NG or LP*	\$ 429	\$ 469
ART-ROT26	Rotisserie Kit, AAEP-26 Grill Only	\$ 249	\$ 279
ART-ROT32	Rotisserie Kit, AAEP-32 Grill Only	\$ 285	\$ 309
ART-ROT36	Rotisserie Kit, AAEP-36 Grill Only	\$ 309	\$ 335
ARTP-G	Drop In Griddle	\$ 415	\$ 449
ASZG	Sear Zone Grate	\$ 429	\$ 469

* ART-ISB Infrared Sear Burner Insert works with both NG and LP applications

PIZZA OVEN



MODEL	DESCRIPTION	MAP	MSRP
ARTP-PZA-NG	Artisan 30" Countertop Pizza Oven, NG	\$ 5,695	\$ 6,319
ARTP-PZA-LP	Artisan 30" Countertop Pizza Oven, LP	\$ 5,695	\$ 6,319
AXE-PZA-CART-01	Pizza Oven Cart	\$ 1,525	\$ 1,615
ART-PZACV	Pizza Oven Cover	\$ 129	\$ 149



WIND GUARDS

MODEL	DESCRIPTION	MAP	MSRP
ARTP-26WS	Guard for Artisan 26" Built-In-Grill	\$ 389	\$ 429
ARTP-32WS	Guard for Artisan 32" Built-In-Grill	\$ 439	\$ 489
ARTP-36WS	Guard for Artisan 36" Built-In-Grill	\$ 505	\$ 549
ARTP-42WS	Guard for Artisan 42" Built-In-Grill	\$ 555	\$ 615

DOOR AND DRAWERS



MODEL	DESCRIPTION	MAP	MSRP
ARTP-17DL	17" Single Door, Left Side	\$ 285	\$ 319
ARTP-17DR	17" Single Door, Right Side	\$ 285	\$ 319
ARTP-26DL	26" Single Door, Left Side	\$ 439	\$ 495
ARTP-26DR	26" Single Door, Right Side	\$ 439	\$ 495



MODEL	DESCRIPTION	MAP	MSRP
ARTP-30DD	30" Double Doors	\$ 485	\$ 527
ARTP-32DD	32" Double Doors	\$ 515	\$ 569
ARTP-36DD	36" Double Doors	\$ 579	\$ 645
ARTP-42DD	42" Double Doors	\$ 639	\$ 699



MODEL	DESCRIPTION	MAP	MSRP
ARTP-DS17	Door Shelf - 17" Single Door	\$ 65	\$ 69
ARTP-DS26	Door Shelf - 26" Single Door	\$ 65	\$ 69
ARTP-DS32	Door Shelf - 32" Double Doors (Must Order 2)	\$ 65	\$ 69
ARTP-DS36	Door Shelf - 36" Double Doors (Must Order 2)	\$ 65	\$ 69
ARTP-DS42	Door Shelf - 42" Double Doors (Must Order 2)	\$ 65	\$ 69



MODEL	DESCRIPTION	MAP	MSRP
ARTP-DR-24SC	24" Single Drawer Unit	\$ 715	\$ 785
ARTP-2DR-17SC	17" Two Drawer Unit	\$ 765	\$ 835
ARTP-3DR-17SC	17" Three Drawer Unit	\$ 909	\$ 1009



MODEL	DESCRIPTION	MAP	MSRP
ARTP-DDC-32SC	32" Door, Drawer Combo Unit	\$ 955	\$ 1,075
ARTP-DDC-36SC	36" Door, Drawer Combo Unit	\$ 1,011	\$ 1,119



MODEL	DESCRIPTION	MAP	MSRP
ARTP-TC-15SC	15" Trash Center Drawer-Single	\$ 789	\$ 875
ARTP-TC2-20SC	20" Trash Center Drawer-Double	\$ 1,175	\$ 1,309
ARTP-LPTDR-18SC	18" Island LP Tank Drawer	\$ 605	\$ 665



MODEL	DESCRIPTION	MAP	MSRP
ARTP-PWC	Prep & Waste Chute	\$ 399	\$ 439

MODEL	DESCRIPTION	MAP	MSRP
ARTP-IC	Drop In Ice Bin	\$ 775	\$ 865
ARTP-TH-17	17" Paper Towel Holder	\$ 319	\$ 359

ALFRESCO LIMITED WARRANTY

(RESIDENTIAL USE ONLY)

GRILLS

The warranties shown below commence on the date of the original purchase.

LIMITED LIFETIME WARRANTY – All Stainless Steel Parts.

LIMITED 5 YEAR WARRANTY – Briquette Trays, Gas Valves and Drip Pans.

FULL 2 YEAR WARRANTY – Parts and Labor.

LIMITED LIFETIME WARRANTY: Alfresco will repair or replace any stainless steel part including all fabricated stainless steel components, stainless steel burners and standard round grill grates (excluding what is covered in the Five Year Limited Warranty) to be defective from workmanship and when subjected to normal residential use and service. This warranty excludes surface corrosion, scratches, discoloration, weather and atmospheric related staining, and minor surface rust and oxidation which are normal conditions. Labor to remove and replace defective parts is not covered after two year of ownership. Shipping and handling cost will apply. Alfresco recommends that you use an authorized Alfresco servicer to perform such service..

LIMITED FIVE-YEAR WARRANTY: Alfresco warrants the stainless steel briquette trays, gas valves and drip pans, to be free from defects in materials and workmanship under normal residential use for a period of five years from the original date of purchase. Labor to remove and replace defective parts is not covered after two year of ownership. Shipping and handling cost will apply. All service provided by Alfresco under this warranty must be performed by an authorized Alfresco servicer.

FULL TWO YEAR WARRANTY: For two years from the date of original purchase, your Alfresco grill warranty covers all parts and labor to repair or replace, under normal residential use, any part of the product that proves to be defective in materials or workmanship. All service provided by Alfresco under this warranty must be performed by an authorized Alfresco servicer, unless otherwise specified by Alfresco. Service will only be provided during normal business hours.

TERMS APPLICABLE TO EACH WARRANTY: The warranty applies only to products installed for normal residential use. The warranty applies only to products installed in any one of the fifty states of the United States, the District of Columbia or the ten provinces of Canada. This warranty does not cover any parts or labor to correct any defect caused by negligence, accident or improper use, maintenance, installation, service or repair.

SERVICE & REPLACEMENT PARTS: For quicker and easier results visit our website at: <http://www.alfrescogrills.com> or, call **866-203-5607** to report service problems and/or to obtain replacement parts for your Alfresco Grill. Replacement parts are shipped F.O.B. Commerce, California 90040. Before calling for service, please make sure you have the following information: Model number, serial number, date of purchase, and proof of purchase by original owner..

LIMITATION & EXCLUSIONS:

1. Alfresco's warranty applies only to the original purchaser and may not be transferred.
2. Alfresco's warranty is in lieu of all other warranties, expressed or implied and all other obligations or liabilities related to the sale or use of its grill products.
3. Alfresco's warranty shall not apply and Alfresco is not responsible for damage resulting from misuse, abuse, alteration of or tampering with the appliance, accident, hostile environment, flare-up fires, improper installation, or installation not in accordance with the instructions contained in the User Manual, or the local codes.
4. Alfresco shall not be liable for incidental, consequential, special or contingent damages resulting from its breach of this written warranty or any implied warranty.
5. Some states do not allow limitations on how long an implied warranty lasts, or the exclusions of or limitations on consequential damages. This warranty gives you specific legal rights and you may have other rights, which vary from state to state.
6. No one has the authority to add to or vary Alfresco's warranty, or to create for Alfresco any other obligation or liability in connection with the sale or use of its products.

Alfresco shall not be responsible for and shall not pay for the following:

1. Installation or start-up.
2. Service by an unauthorized service provider.
3. Damage or repair due to service by an unauthorized service provider or use of unauthorized parts.
4. Improper installation.
5. Damage caused by accidents, abuse, alteration, misuse, installation that is not in accordance with the instructions contained in the User Manual, or local codes.
6. Units installed in non-residential applications such as retirement homes, restaurants, hotels, schools, etc.
7. To correct normal adjustments or settings due to improper installation, commissioning or local gas supply properties.
8. Shipping and handling costs, export duties, or installation cost.
9. The cost of service calls to diagnose trouble; or removal or re-installation cost.

Alfresco Open Air Culinary Systems Grill Warranty Released 1/01/2013

ALFRESCO REFRIGERATOR WARRANTY

I. FULL ONE YEAR WARRANTY: Built-in/freestanding undercounter refrigerators and all of their components, are warranted to be free from defects in material or workmanship under normal household use for a period of one (1) year from the date of original retail purchase. Alfresco, agrees to repair or replace at its option, any part which fails or is found to be defective during the warranty period.

II. LIMITED FIVE-YEAR WARRANTY: The structural integrity of Alfresco-made stainless steel parts are warranted to be free from defects in material and workmanship, when subjected to normal operation and service in residential applications only, for a period of five years from the date of purchase. This warranty is limited to the replacement of the defective parts.

III. ONE YEAR (OUTDOOR) REFRIGERATION WARRANTY: Any sealed refrigeration system component, as listed below, is warranted to be free from defective materials or workmanship in normal household use during the first year from the date of original retail purchase. Alfresco agrees to repair or replace, at its option, any part, which fails or is found to be defective during the warranty period. Sealed Refrigeration System Components: Compressor, Evaporator, Condenser, Connecting Tubing, Dryer/Strainer. It is recommended that in temperatures above 120 degrees F and below 15 degrees F the unit be shut off. The normal operating range for the unit for best interior temperature results is between 32 degrees F and 100 degrees F.

IV. SERVICE & REPLACEMENT PARTS: For quicker and easier results visit our website at: <http://www.alfrescogrills.com> or, call **866-203-5607** to report service problems and/or to obtain replacement parts for your Alfresco Grill. Replacement parts are shipped F.O.B. Commerce, California 90040. Before calling for service, please make sure you have the following information: **Model number, Serial Number, Date of Purchase**, and **Proof of Purchase by Original Owner**.

V. LIMITATION & EXCLUSIONS:

1. Alfresco's warranty applies only to the original purchaser and may not be transferred.
2. Alfresco's warranty is in lieu of all other warranties, expressed or implied and all other obligations or liabilities related to the sale or use of its grill products.
3. Alfresco's warranty shall not apply and Alfresco is not responsible for damage resulting from misuse, abuse, alteration of or tampering with the appliance, accident, hostile environment, flare-up fires, improper installation, or installation not in accordance with the instructions contained in the User Manual, or the local codes.
4. Alfresco shall not be liable for incidental, consequential, special or contingent damages resulting from its breach of this written warranty or any implied warranty.
5. Some states do not allow limitations on how long an implied warranty lasts, or the exclusions of or limitations on consequential damages. This warranty gives you specific legal rights and you may have other rights, which vary from state to state.
6. No one has the authority to add to or vary Alfresco's warranty, or to create for Alfresco any other obligation or liability in connection with the sale or use of its products.

VI. WHAT IS NOT COVERED:

Alfresco shall not be responsible for and shall not pay for the following:

1. Installation or start-up.
2. Service by an unauthorized service provider.
3. Damage or repair due to service by an unauthorized service provider or use of unauthorized parts.
4. Improper installation.
5. Damage caused by accidents, abuse, alteration, misuse, installation that is not in accordance with the instructions contained in the User Manual, or local codes.
6. Units installed in non-residential applications such as retirement homes, restaurants, hotels, schools, etc.
7. To correct normal adjustments or settings due to improper installation, commissioning or local gas supply properties.
8. Shipping and handling costs, export duties, or installation cost.
9. The cost of service calls to diagnose trouble; or removal or re-installation cost.

Alfresco Open Air Culinary Systems Grill Warranty Released 1/01/2013

ALFRESCO & ARTISAN GRILL “MULTI-USER” LIMITED WARRANTY

This warranty supports Alfresco and Artisan grills when used in Multi-User* environment including but not limited to apartment complexes, multi-family dwelling complexes, schools, hotels, fire stations, police stations, etc.

Excluding: Restaurants and settings where the grill usage is primarily commercial

FULL ONE YEAR WARRANTY: For one year from the date of original purchase, your Multi-Use Alfresco / Artisan grill warranty covers all parts and labor to repair or replace, under normal use, any part of the product that proves to be defective in materials or workmanship. All service provided under this warranty must be performed by an authorized Alfresco / Artisan servicer, unless otherwise specified by Alfresco. Service will only be provided during normal business hours. **The above stated warranty is the total coverage available in support of Alfresco and Artisan grill products utilized in the multi-use environment.**

TERMS APPLICABLE TO EACH WARRANTY: The warranty applies only to products installed in Multi-Use facilities but utilized for normal residential type (Non-Commercial) use. The warranty applies only to products installed in any one of the fifty states of the United States, the District Columbia or the ten provinces of Canada. This warranty does not cover any parts or labor to correct defects caused by negligence, accident or improper use, maintenance, installation, service or repair. .

SERVICE & REPLACEMENT PARTS: For quicker and easier results visit our websites at: <http://www.alfrescogrills.com> or <http://www.artisangrills.com> or, call 866-203-5607 to report service problems and/or to obtain replacement parts for your Alfresco Grill. Replacement parts are shipped F.O.B. City of Industry, California 91745. Before calling for service, please make sure you have the following information: Model number, serial number, date of purchase and proof of purchase by original owner. .

SERVICE & REPLACEMENT PARTS: For quicker and easier results visit our website at: <http://www.alfrescogrills.com> or, call **866-203-5607** to report service problems and/or to obtain replacement parts for your Alfresco Grill. Replacement parts are shipped F.O.B. Commerce, California 90040. Before calling for service, please make sure you have the following information: Model number, serial number, date of purchase, and proof of purchase by original owner.

LIMITATION & EXCLUSIONS:

1. This warranty applies only to the original purchaser and may not be transferred.
2. This warranty is in lieu of all other warranties, expressed or implied and all other obligations or liabilities related to the sale or use of its grill products.
3. Alfresco's warranty shall not apply and Alfresco is not responsible for damage resulting from misuse, abuse, alteration of or tampering with the appliance, accident, hostile environment, flare-up fires, improper installation, or installation not in accordance with the instructions contained in the User Manual, or the local codes.
4. Alfresco / Artisan shall not be liable for incidental, consequential, special or contingent damages resulting from its breach of this written warranty or any implied warranty.
5. Some states do not allow limitations on how long an implied warranty lasts, or the exclusions of or limitations on consequential damages. This warranty gives you specific legal rights and you may have other rights, which vary from state to state.
6. No one has the authority to add to or vary this warranty, or to create for Alfresco / Artisan any other obligation or liability in connection with the sale or use of its products.

Alfresco Open Air Culinary Systems Grill Warranty Released 1/01/2018

ARTISAN™ GRILL WARRANTY

The warranties shown below commence on the date of the original purchase.

15 YEARS – Stainless Steel Burners.

10 YEARS – All Stainless Steel Parts.

3 YEARS – Ceramic Briquette Trays (briquette excluded).

1 YEAR – Ignition Systems (Batteries excluded), Side Burners, Rotisserie Motors and Thermometers.

TERMS APPLICABLE TO THE WARRANTY ABOVE:

Artisan™ Grill's warranty applies only to products installed for normal residential use. The warranty applies only to products installed in any one of the fifty states of the United States, the District of Columbia or the ten provinces of Canada.

This warranty does not apply to rust, corrosion, oxidation or discoloration, unless the affected component becomes inoperable, to correct any defect caused by negligence, accident or improper use, maintenance, installation, service or repair. It does not cover labor or labor related charges. Product must be installed and connected to a gas source in accordance with what is specified in the installation instructions or in the Care and Use Manual, with no exceptions, and by a qualified professional installer.

All replacement components, such as valves, etc, must be an Artisan product. Artisan's warranty only applies to the original purchaser and may not be transferred, and commences from the date of purchase, and is valid only with proof of purchase.

LIMITATIONS & EXCLUSIONS:

1. Artisan's warranty applies only to the original purchaser and may not be transferred.
2. Artisan's warranty is in lieu of all other warranties, expressed or implied and all other obligations or liabilities related to the sale or use of its grill products.
3. Artisan's warranty shall not apply and Artisan is not responsible for damage resulting from misuse, abuse, alteration or tampering with the appliance, accident, hostile environment, flare-up fires, improper installation, or installation not in accordance with the instructions contained in the User Manual, or the local codes.
4. Artisan shall not be liable for incidental, consequential, special or contingent damages resulting from its breach of this written warranty or any implied warranty.
5. Some states do not allow limitations on how long an implied warranty lasts, or the exclusions of or limitations on consequential damages.

This warranty gives you specific legal rights and you may have other rights, which vary from state to state. 6. No one has the authority to add to or vary Artisan's warranty, or to create for Artisan any other obligation or liability in connection with the sale or use of its products.

ARTISAN SHALL NOT BE RESPONSIBLE FOR AND SHALL NOT PAY FOR THE FOLLOWING:

1. Installation or start-up.
2. Service by an unauthorized service provider.
3. Damage or repair due to service by an unauthorized service provider or use of unauthorized parts.
4. Improper installation.
5. Damage caused by accidents, abuse, alteration, misuse, installation that is not in accordance with the instructions contained in the User Manual, or local codes.
6. Units installed in nonresidential applications such as retirement homes, restaurants, hotels, schools, etc.
7. To correct normal adjustments or settings due to improper installation, commissioning or local gas supply properties.
8. Shipping and handling costs, export duties, or installation cost.
9. The cost of service calls to diagnose trouble; or removal or re-installation cost.

SERVICE AND REPLACEMENT PARTS:

For quicker and easier results, visit our website at: <http://artisangrills.com> or, call our toll free number at: **(866)-203-5607** to report service problems and / or to obtain replacement parts for your Artisan™ Grill.

Replacement parts are shipped F.O.B. Commerce, California 90040.

Before calling for service, please make sure you have the following information:

- Model number and Serial number
- Date of purchase and Proof of purchase

The warranty specifically excludes liability for indirect, incidental or consequential damages.

This product is designed for residential use only.

For Warranty Claims, Please Call: **(866) 203-5607**

TERMS AND CONDITIONS

Orders: All orders and any subsequent change orders must be submitted in writing and delivered to Maple Distributing by mail, website, EDI, fax or e-mail. No telephone orders will be accepted. Special Order items are Non-Cancellable.

Prices: All prices are subject to change without notice and are exclusive of any sales or use taxes, shipping, delivery, special packaging, or handling charges that may apply to each customer or to each order.

Minimum Advertised Pricing: All sales are subject to Maple Distributing or Manufacturer minimum advertised prices. Failure to comply with minimum advertised prices will result in cancellation of any agreement and violators will not be entitled to purchase further products.

Minimum Sale Price: All sales are subject to Maple Distributing or Manufacturer minimum sale prices. Failure to comply with minimum sale prices will result in cancellation of any agreement and violators will not be entitled to purchase further products.

Freight and Handling: Maple Distributing reserves the right to ship products by its choice of carrier. All shipments are F.O.B. from place of shipment, and risk of loss shall pass to the Buyer upon delivery to the carrier at the point of shipment. Additional charges may apply for special handling and packaging.

Deliveries: Maple Distributing shall not be liable for failure to deliver or for delays in delivery or performance due to: (1) causes beyond its reasonable control; (2) acts of God, acts of Buyer, acts of civil or military authority, governmental allocations or controls, fires, strikes or other labor difficulties, riots or other civil disturbances, delays in its usual source of supply, delays in transportation; (3) any other commercial impracticability. In the event of such delay, the date of delivery or performance shall be extended for a period equal to the time lost by reason of the delay.

Claims: All claims for non-conforming delivery of Products must be made within twelve (12) days of receipt of shipment.

Damage or Loss: Any claim for damage or loss in shipment should be made to the carrier immediately by the customer. Products become the responsibility of the Buyer when accepted by the carrier in good condition from Maple Distributing and we are not able to process shipping damage claims.

Returns: Only Items marked in this Price List as "Stock Item" are subject to return. All other items are considered Special Order Items and are NOT RETURNABLE. No Products may be returned without a Maple Distributing Return Goods Authorization (RGA) Number issued prior to the return of Product. Any product returned without an RGA will be refused and returned to the sender. RGA's are valid for thirty (30) days only. All returns are subject to inspection before being approved for credit - products must be in salable condition to be considered for return or replacement. A 20% restocking charge will apply to all returns.

Payment: Unless otherwise noted, payment terms are Net Due on Receipt. Balances owed on invoices over 30 days old are subject to a 1.5% per month charge. Each shipment or delivery shall be deemed to have been sold under a separate and or independent contract and payment thereof shall be made in accordance with the terms of this agreement and of the invoice rendered by Maple Distributing. Buyer agrees that title to the personal property described herein shall not vest in Buyer until paid in full. In the event of insolvency or the filing of bankruptcy by the Buyer, Buyer agrees to return all merchandise to Maple Distributing dba Maple Distributing.

Warranties: Products distributed by Maple Distributing are the products of reputable manufacturers sold under their respective brand or trade names. Maple Distributing shall use its best efforts to obtain from each manufacturer, in accordance with the manufacturer's warranty or customary practice, the repair or replacement of products that may prove defective in material or workmanship. The foregoing shall constitute the exclusive remedy of the Buyer and the sole obligation of Maple Distributing Except as to Title, THERE ARE NO WARRANTIES, EITHER WRITTEN, ORAL, IMPLIED, OR STATUTORY relating to the described products which shall extend beyond that described in this paragraph. NO WARRANTY OF MERCHANTABILITY OR OF FITNESS FOR PURPOSE SHALL APPLY.

Limitation of Liability: Maple Distributing's liability on any claims for loss or damage arising out of this contract or from the performance or breach thereof or connected with the supplying of products hereunder, or its sale, resale, operation or use, whether based on warranty, contract, negligence or other grounds shall not exceed the price allowable for such products or parts thereof involved in the claim. Maple Distributing shall not, under any circumstances, be liable for any labor charges unless agreed upon in advance and in writing by Maple Distributing and the manufacturer of the products involved. Maple Distributing shall not in any event be liable for special or consequential damages, including, but not limited to, loss of profits or revenue, loss of use of the product or any associated product, cost of capital, cost of substitute products, facilities or services, downtime costs, or claims of customers of the Buyer for such damages.

General: The possession of this Price List by anyone is not to be considered as an offer to sell any of the Products contained herein. This Price List supersedes all previous price lists or memorandums. Maple Distributing's existing Trade Terms and Conditions remain in effect. The above Terms and Conditions shall be a part of all Orders accepted by Maple Distributing and shall supersede any conflicting provisions of our customer's purchase orders. These terms and conditions are subject to change without notice.



Maple Distributing

2100 Century Cir, Irving, TX 75062

Phone: 800-866-4774

www.mapledistributing.com